



[Go to Product page](#)

Datasheet for ABIN6256841

anti-MANSC1 antibody (Internal Region)

2 Images

Overview

Quantity:	100 µL
Target:	MANSC1
Binding Specificity:	Internal Region
Reactivity:	Human, Rat
Host:	Rabbit
Clonality:	Polyclonal
Conjugate:	This MANSC1 antibody is un-conjugated
Application:	Western Blotting (WB), ELISA, Immunohistochemistry (IHC)

Product Details

Immunogen:	A synthesized peptide derived from human MANS1, corresponding to a region within the internal amino acids.
Isotype:	IgG
Specificity:	MANS1 Antibody detects endogenous levels of total MANS1.
Purification:	The antiserum was purified by peptide affinity chromatography using SulfoLink™ Coupling Resin (Thermo Fisher Scientific).

Target Details

Target:	MANSC1
Alternative Name:	MANSC1 (MANSC1 Products)

Target Details

Background: Gene: MANSC1

Gene ID: 54682

UniProt: [Q9H8J5](#)

Application Details

Application Notes: WB 1:500-1:2000, IHC 1:50-1:200, ELISA(peptide) 1:20000-1:40000

Restrictions: For Research Use only

Handling

Format: Liquid

Concentration: 1 mg/mL

Buffer: Rabbit IgG in phosphate buffered saline, pH 7.4, 150 mM NaCl, 0.02 % sodium azide and 50 % glycerol.

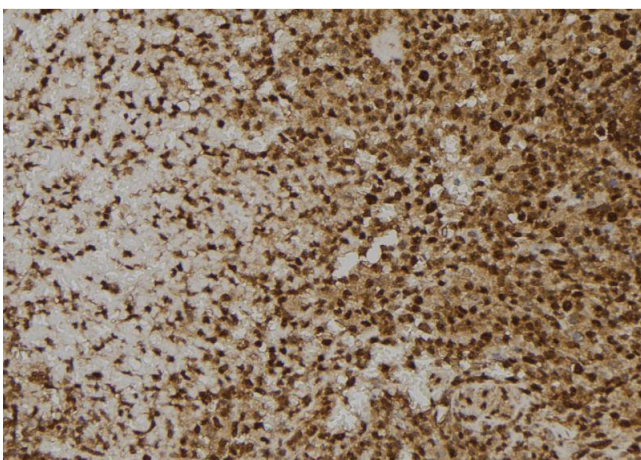
Preservative: Sodium azide

Precaution of Use: This product contains Sodium azide: a POISONOUS AND HAZARDOUS SUBSTANCE which should be handled by trained staff only.

Storage: -20 °C

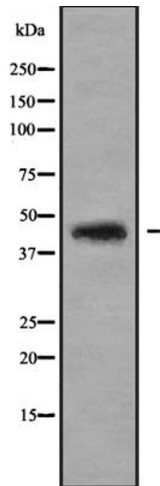
Expiry Date: 12 months

Images



Immunohistochemistry

Image 1. ABIN6273600 at 1/100 staining Human spleen tissue by IHC-P. The sample was formaldehyde fixed and a heat mediated antigen retrieval step in citrate buffer was performed. The sample was then blocked and incubated with the antibody for 1.5 hours at 22°C. An HRP conjugated goat anti-rabbit antibody was used as the secondary.



Western Blotting

Image 2. Western blot analysis of MANS1 expression in HEK293 cells. The lane on the left is treated with the antigen-specific peptide.