

Datasheet for ABIN6256857  
**anti-TRIM31 antibody (Internal Region)**

## 2 Images

[Go to Product page](#)

## Overview

Quantity:	100 µL
Target:	TRIM31
Binding Specificity:	Internal Region
Reactivity:	Human
Host:	Rabbit
Clonality:	Polyclonal
Conjugate:	This TRIM31 antibody is un-conjugated
Application:	Western Blotting (WB), ELISA, Immunohistochemistry (IHC), Immunofluorescence (IF), Immunocytochemistry (ICC)

## Product Details

Immunogen:	A synthesized peptide derived from human TRIM31, corresponding to a region within the internal amino acids.
Isotype:	IgG
Specificity:	TRIM31 Antibody detects endogenous levels of total TRIM31.
Purification:	The antiserum was purified by peptide affinity chromatography using SulfoLink™ Coupling Resin (Thermo Fisher Scientific).

## Target Details

Target:	TRIM31
Alternative Name:	TRIM31 ( <a href="#">TRIM31 Products</a> )

## Target Details

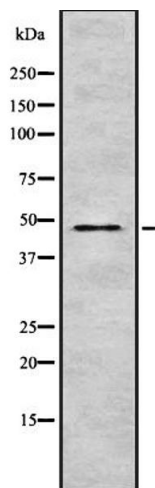
Background:	Description: Regulator of Src-induced anchorage independent cell growth (By similarity). May have E3 ubiquitin-protein ligase activity. Gene: TRIM31
Gene ID:	11074
UniProt:	<a href="#">Q9BZY9</a>

## Application Details

Application Notes:	WB 1:500-1:2000, IHC 1:50-1:200, IF/ICC 1:100-1:500, ELISA(peptide) 1:20000-1:40000
Restrictions:	For Research Use only

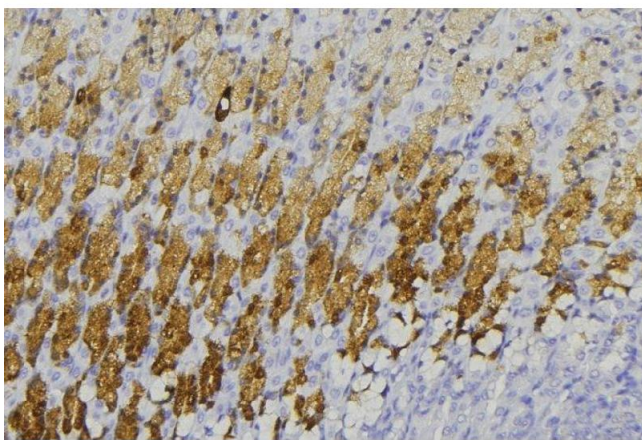
## Handling

Format:	Liquid
Concentration:	1 mg/mL
Buffer:	Rabbit IgG in phosphate buffered saline, pH 7.4, 150 mM NaCl, 0.02 % sodium azide and 50 % glycerol.
Preservative:	Sodium azide
Precaution of Use:	This product contains Sodium azide: a POISONOUS AND HAZARDOUS SUBSTANCE which should be handled by trained staff only.
Storage:	-20 °C
Expiry Date:	12 months



### Western Blotting

**Image 1.** Western blot analysis of TRI31 expression in HEK293 cells. The lane on the left is treated with the antigen-specific peptide.



### Immunohistochemistry

**Image 2.** ABIN6273593 at 1/100 staining Human gastric tissue by IHC-P. The sample was formaldehyde fixed and a heat mediated antigen retrieval step in citrate buffer was performed. The sample was then blocked and incubated with the antibody for 1.5 hours at 22°C. An HRP conjugated goat anti-rabbit antibody was used as the secondary