

Datasheet for ABIN6256861
anti-NPY4R antibody (N-Term)[Go to Product page](#)

2 Images

Overview

Quantity:	100 µL
Target:	NPY4R
Binding Specificity:	N-Term
Reactivity:	Human
Host:	Rabbit
Clonality:	Polyclonal
Conjugate:	This NPY4R antibody is un-conjugated
Application:	Western Blotting (WB), ELISA, Immunohistochemistry (IHC)

Product Details

Immunogen:	A synthesized peptide derived from human NPY4R, corresponding to a region within N-terminal amino acids.
Isotype:	IgG
Specificity:	NPY4R Antibody detects endogenous levels of total NPY4R.
Purification:	The antiserum was purified by peptide affinity chromatography using SulfoLink™ Coupling Resin (Thermo Fisher Scientific).

Target Details

Target:	NPY4R
Alternative Name:	NPY4R (NPY4R Products)

Target Details

Background:	Description: Receptor for neuropeptide Y and peptide YY. The rank order of affinity of this receptor for pancreatic polypeptides is PP, PP (2-36) and [Ile-31, Gln-34] PP > [Pro-34] PYY > PYY and [Leu-31, Pro-34] NPY > NPY > PYY (3-36) and NPY (2-36) > PP (13-36) > PP (31-36) > NPY free acid. Gene: NPY4R
-------------	---

Molecular Weight:	42 kDa
-------------------	--------

Gene ID:	100996758, 5540
----------	-----------------

UniProt:	P50391
----------	------------------------

Application Details

Application Notes:	WB 1:500-1:2000, IHC 1:50-1:200, ELISA(peptide) 1:20000-1:40000
--------------------	---

Restrictions:	For Research Use only
---------------	-----------------------

Handling

Format:	Liquid
---------	--------

Concentration:	1 mg/mL
----------------	---------

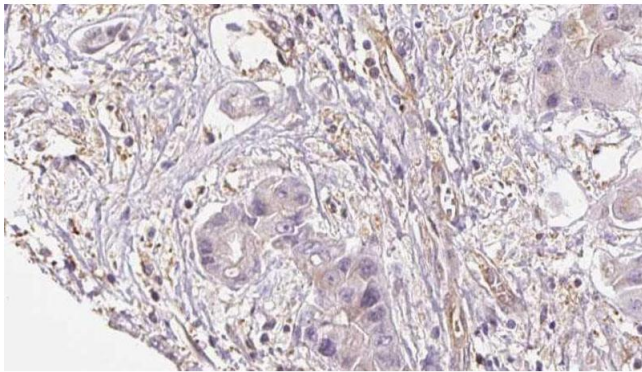
Buffer:	Rabbit IgG in phosphate buffered saline, pH 7.4, 150 mM NaCl, 0.02 % sodium azide and 50 % glycerol.
---------	--

Preservative:	Sodium azide
---------------	--------------

Precaution of Use:	This product contains Sodium azide: a POISONOUS AND HAZARDOUS SUBSTANCE which should be handled by trained staff only.
--------------------	--

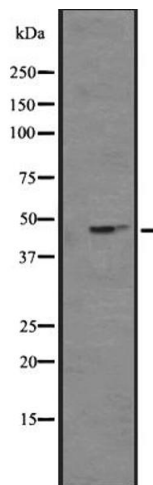
Storage:	-20 °C
----------	--------

Expiry Date:	12 months
--------------	-----------



Immunohistochemistry

Image 1. ABIN6273953 at 1/100 staining Human liver cancer tissue by IHC-P. The sample was formaldehyde fixed and a heat mediated antigen retrieval step in citrate buffer was performed. The sample was then blocked and incubated with the antibody for 1.5 hours at 22°C. An HRP conjugated goat anti-rabbit antibody was used as the secondary.



Western Blotting

Image 2. Western blot analysis of NPY4R expression in K562 cell line lysates. The lane on the left is treated with the antigen-specific peptide.