



Datasheet for ABIN6256866
anti-OR52Z1 antibody



[Go to Product page](#)

1 Image

Overview

Quantity:	100 µL
Target:	OR52Z1
Reactivity:	Human
Host:	Rabbit
Clonality:	Polyclonal
Conjugate:	This OR52Z1 antibody is un-conjugated
Application:	ELISA, Immunohistochemistry (IHC), Western Blotting (WB)

Product Details

Immunogen:	A synthesized peptide
Isotype:	IgG
Specificity:	OR52Z1P antibody detects endogenous levels of total OR52Z1P
Cross-Reactivity:	Human
Purification:	The antiserum was purified by peptide affinity chromatography using SulfoLink™ Coupling Resin (Thermo Fisher Scientific).

Target Details

Target:	OR52Z1
Alternative Name:	OR52Z1P (OR52Z1 Products)
Molecular Weight:	35 kDa

Application Details

Application Notes: WB 1:500-1:2000 IHC 1:50-1:200

Restrictions: For Research Use only

Handling

Format: Liquid

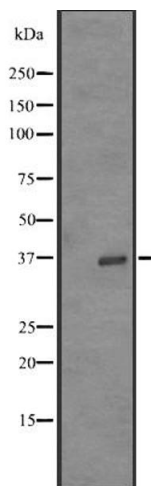
Concentration: 1 mg/mL

Buffer: Rabbit IgG in phosphate buffered saline, pH 7.4, 150 mM NaCl, 0.02 % sodium azide and 50 % glycerol.

Preservative: Sodium azide

Precaution of Use: This product contains Sodium azide: a POISONOUS AND HAZARDOUS SUBSTANCE which should be handled by trained staff only.

Images



Western Blotting

Image 1. Western blot analysis of OR52Z1P expression in K562 cell line lysates ;,The lane on the left is treated with the antigen-specific peptide.