

Datasheet for ABIN6256885

anti-OXER1 antibody[Go to Product page](#)**1** Image

Overview

| | |
|--------------|--|
| Quantity: | 100 µL |
| Target: | OXER1 |
| Reactivity: | Human |
| Host: | Rabbit |
| Clonality: | Polyclonal |
| Conjugate: | This OXER1 antibody is un-conjugated |
| Application: | Western Blotting (WB), ELISA, Immunofluorescence (IF), Immunocytochemistry (ICC) |

Product Details

| | |
|-------------------|---|
| Immunogen: | A synthesized peptide |
| Isotype: | IgG |
| Specificity: | OXER1 Antibody detects endogenous levels of total OXER1 |
| Cross-Reactivity: | Human |
| Purification: | The antiserum was purified by peptide affinity chromatography using SulfoLink™ Coupling Resin (Thermo Fisher Scientific). |

Target Details

| | |
|-------------------|--|
| Target: | OXER1 |
| Alternative Name: | OXER1 (OXER1 Products) |
| Background: | Description: Receptor for eicosanoids and polyunsaturated fatty acids such as 5-oxo- |

Target Details

6E,8Z,11Z,14Z-eicosatetraenoic acid (5-OXO-ETE), 5(S)-hydroperoxy-6E,8Z,11Z,14Z-eicosatetraenoic acid (5(S)-HPETE) and arachidonic acid. Seems to be coupled to the G(i)/G(o), families of heteromeric G proteins.
Gene: OXER1

Molecular Weight: 46 kDa

Gene ID: 165140

UniProt: [Q8TDS5](#)

Pathways: [cAMP Metabolic Process](#)

Application Details

Application Notes: WB 1:500~1:1000 IF/ICC 1:100-1:500

Restrictions: For Research Use only

Handling

Format: Liquid

Concentration: 1 mg/mL

Buffer: Rabbit IgG in phosphate buffered saline , pH 7.4, 150 mM NaCl, 0.02 % sodium azide and 50 % glycerol.

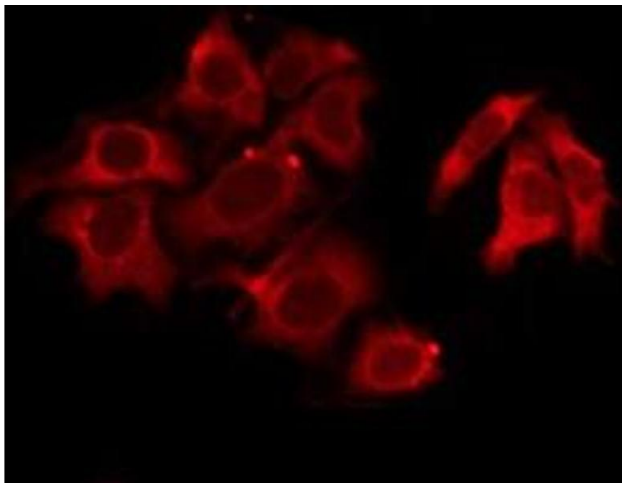
Preservative: Sodium azide

Precaution of Use: This product contains Sodium azide: a POISONOUS AND HAZARDOUS SUBSTANCE which should be handled by trained staff only.

Storage: -20 °C

Storage Comment: Store at -20 °C.Stable for 12 months from date of receipt

Expiry Date: 12 months



Immunofluorescence (fixed cells)

Image 1. ABIN6276273 staining MCF7 by IF/ICC. The sample were fixed with PFA and permeabilized in 0.1% Triton X-100, then blocked in 10% serum for 45 minutes at 25°C. The primary antibody was diluted at 1/200 and incubated with the sample for 1 hour at 37°C. An Alexa Fluor 594 conjugated goat anti-rabbit IgG (H+L) Ab, diluted at 1/600, was used as the secondary antibody.