



[Go to Product page](#)

Datasheet for ABIN6256889

anti-ABHD12 antibody

2 Images

Overview

Quantity:	100 µL
Target:	ABHD12
Reactivity:	Human, Mouse, Rat
Host:	Rabbit
Clonality:	Polyclonal
Conjugate:	This ABHD12 antibody is un-conjugated
Application:	Western Blotting (WB), ELISA, Immunocytochemistry (ICC), Immunofluorescence (IF)

Product Details

Immunogen:	A synthesized peptide
Isotype:	IgG
Specificity:	ABHD12 Antibody detects endogenous levels of total ABHD12
Cross-Reactivity:	Human, Mouse (Murine), Rat (Rattus)
Purification:	The antiserum was purified by peptide affinity chromatography using SulfoLink™ Coupling Resin (Thermo Fisher Scientific).

Target Details

Target:	ABHD12
Alternative Name:	ABHD12 (ABHD12 Products)
Background:	Description: Lysophosphatidylserine (LPS) lipase that plays a key role in the central nervous

Target Details

system. Represents a major LPS lipase in the brain (By similarity). May also have a 2-arachidonoylglycerol (2-AG) hydrolase activity and act as a regulator of endocannabinoid signaling pathways.

Gene: ABHD12

Molecular Weight: 45 kDa

Gene ID: 26090

UniProt: [Q8N2K0](#)

Application Details

Application Notes: WB 1:500~1:1000, IF/ICC 1:100-1:500

Restrictions: For Research Use only

Handling

Format: Liquid

Concentration: 1 mg/mL

Buffer: Rabbit IgG in phosphate buffered saline , pH 7.4, 150 mM NaCl, 0.02 % sodium azide and 50 % glycerol.

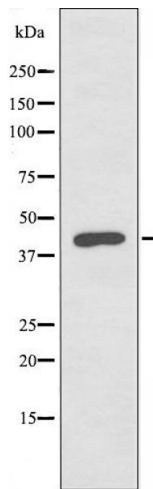
Preservative: Sodium azide

Precaution of Use: This product contains Sodium azide: a POISONOUS AND HAZARDOUS SUBSTANCE which should be handled by trained staff only.

Storage: -20 °C

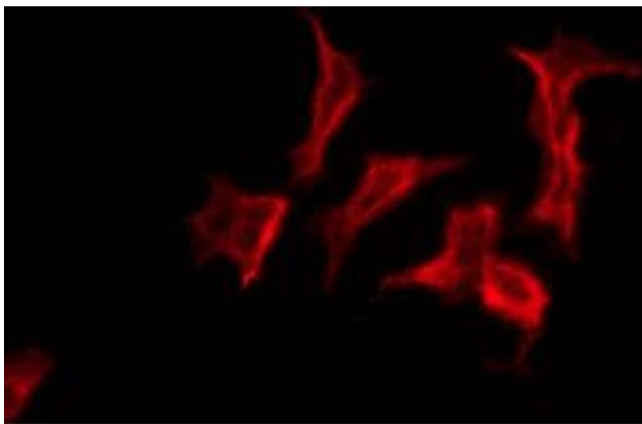
Storage Comment: Store at -20 °C.Stable for 12 months from date of receipt

Expiry Date: 12 months



Western Blotting

Image 1. Western blot analysis of extracts from COLO cells, using ABHD12 antibody.



Immunofluorescence (fixed cells)

Image 2. ABIN6274788 staining COLO205 by IF/ICC. The sample were fixed with PFA and permeabilized in 0.1% Triton X-100, then blocked in 10% serum for 45 minutes at 25°C. The primary antibody was diluted at 1/200 and incubated with the sample for 1 hour at 37°C. An Alexa Fluor 594 conjugated goat anti-rabbit IgG (H+L) Ab, diluted at 1/600, was used as the secondary antibody.