

Datasheet for ABIN6256894
anti-MAGI2 antibody (N-Term)

2 Images

[Go to Product page](#)

Overview

Quantity:	100 µL
Target:	MAGI2
Binding Specificity:	N-Term
Reactivity:	Human, Mouse, Rat
Host:	Rabbit
Clonality:	Polyclonal
Conjugate:	This MAGI2 antibody is un-conjugated
Application:	ELISA, Western Blotting (WB), Immunocytochemistry (ICC), Immunofluorescence (IF)

Product Details

Immunogen:	A synthesized peptide derived from human MAGI2, corresponding to a region within N-terminal amino acids.
Isotype:	IgG
Specificity:	MAGI2 Antibody detects endogenous levels of total MAGI2.
Predicted Reactivity:	Pig,Horse,Rabbit,Dog
Purification:	The antiserum was purified by peptide affinity chromatography using SulfoLink™ Coupling Resin (Thermo Fisher Scientific).

Target Details

Target:	MAGI2
---------	-------

Target Details

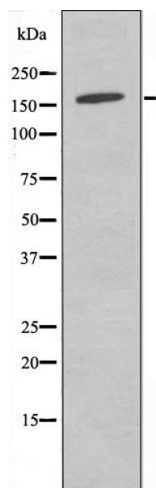
Alternative Name:	MAGI2 (MAGI2 Products)
Background:	<p>Description: Seems to act as scaffold molecule at synaptic junctions by assembling neurotransmitter receptors and cell adhesion proteins. May play a role in regulating activin-mediated signaling in neuronal cells. Enhances the ability of PTEN to suppress AKT1 activation. Plays a role in nerve growth factor (NGF)-induced recruitment of RAPGEF2 to late endosomes and neurite outgrowth.</p> <p>Gene: MAGI2</p>
Molecular Weight:	159 kDa
Gene ID:	9863
UniProt:	Q86UL8
Pathways:	Neurotrophin Signaling Pathway

Application Details

Application Notes:	WB 1:500-1:1000, IF/ICC 1:100-1:500, ELISA(peptide) 1:20000-1:40000
Restrictions:	For Research Use only

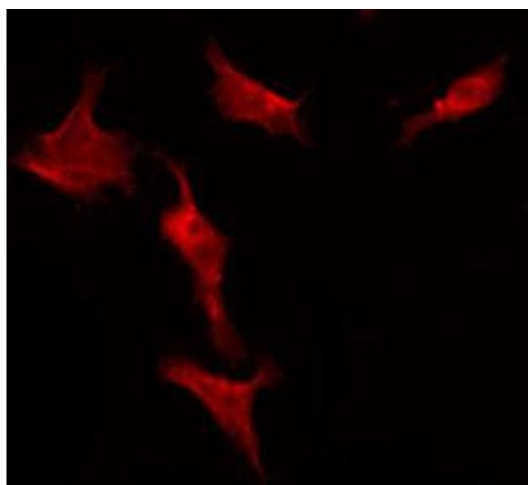
Handling

Format:	Liquid
Concentration:	1 mg/mL
Buffer:	Rabbit IgG in phosphate buffered saline , pH 7.4, 150 mM NaCl, 0.02 % sodium azide and 50 % glycerol.
Preservative:	Sodium azide
Precaution of Use:	This product contains Sodium azide: a POISONOUS AND HAZARDOUS SUBSTANCE which should be handled by trained staff only.
Storage:	-20 °C
Storage Comment:	Store at -20 °C. Stable for 12 months from date of receipt.
Expiry Date:	12 months



Western Blotting

Image 1. Western blot analysis of extracts from HT-29 cells, using MAGI2 antibody.



Immunofluorescence (fixed cells)

Image 2. ABIN6274415 staining A549 by IF/ICC. The sample were fixed with PFA and permeabilized in 0.1% Triton X-100, then blocked in 10% serum for 45 minutes at 25°C. The primary antibody was diluted at 1/200 and incubated with the sample for 1 hour at 37°C. An Alexa Fluor 594 conjugated goat anti-rabbit IgG (H+L) Ab, diluted at 1/600, was used as the secondary antibody.