

Datasheet for ABIN6256913
anti-AFT1 antibody (Internal Region)[Go to Product page](#)

4 Images

Overview

Quantity:	100 µL
Target:	AFT1
Binding Specificity:	Internal Region
Reactivity:	Human, Mouse, Rat
Host:	Rabbit
Clonality:	Polyclonal
Conjugate:	This AFT1 antibody is un-conjugated
Application:	Western Blotting (WB), ELISA, Immunohistochemistry (IHC), Immunofluorescence (IF), Immunocytochemistry (ICC)

Product Details

Immunogen:	A synthesized peptide derived from human ATF1, corresponding to a region within the internal amino acids.
Isotype:	IgG
Specificity:	ATF1 Antibody detects endogenous levels of total ATF1.
Predicted Reactivity:	Pig,Zebrafish,Bovine,Horse,Sheep,Rabbit,Dog,Chicken,Xenopus
Purification:	The antiserum was purified by peptide affinity chromatography using SulfoLink™ Coupling Resin (Thermo Fisher Scientific).

Target Details

Target:	AFT1
---------	------

Target Details

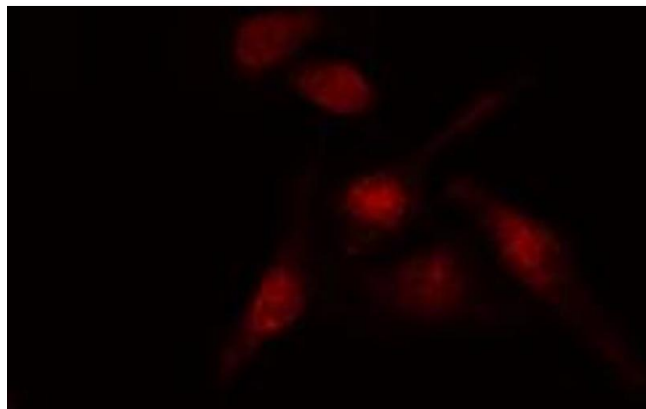
Alternative Name:	ATF1 (AFT1 Products)
Background:	<p>Description: This protein binds the cAMP response element (CRE) (consensus: 5'-GTGACGT[AC][AG]-3'), a sequence present in many viral and cellular promoters. Binds to the Tax-responsive element (TRE) of HTLV-I. Mediates PKA-induced stimulation of CRE-reporter genes. Represses the expression of FTH1 and other antioxidant detoxification genes. Triggers cell proliferation and transformation.</p> <p>Gene: ATF1</p>
Molecular Weight:	36 kDa
Gene ID:	466
UniProt:	P18846
Pathways:	Neurotrophin Signaling Pathway , Activation of Innate immune Response , Myometrial Relaxation and Contraction , Toll-Like Receptors Cascades

Application Details

Application Notes:	WB 1:500-1:1000, IF/ICC 1:100-1:500, IHC 1:50-1:200, ELISA(peptide) 1:20000-1:40000
Restrictions:	For Research Use only

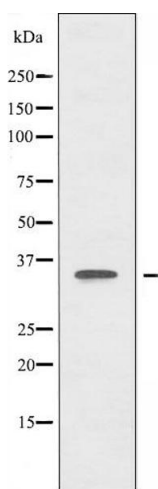
Handling

Format:	Liquid
Concentration:	1 mg/mL
Buffer:	Rabbit IgG in phosphate buffered saline , pH 7.4, 150 mM NaCl, 0.02 % sodium azide and 50 % glycerol.
Preservative:	Sodium azide
Precaution of Use:	This product contains Sodium azide: a POISONOUS AND HAZARDOUS SUBSTANCE which should be handled by trained staff only.
Storage:	-20 °C
Storage Comment:	Store at -20 °C. Stable for 12 months from date of receipt.
Expiry Date:	12 months



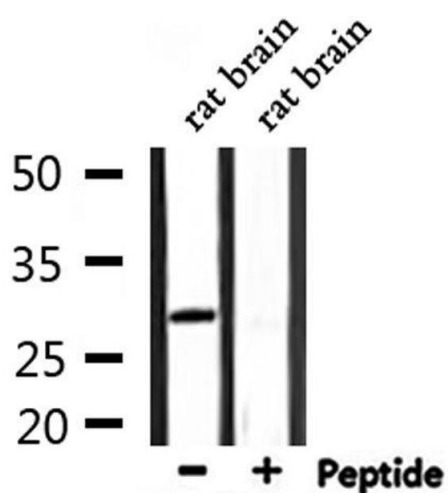
Immunofluorescence (fixed cells)

Image 1. ABIN6274188 staining HT29 cells by IF/ICC. The sample were fixed with PFA and permeabilized in 0.1% Triton X-100, then blocked in 10% serum for 45 minutes at 25°C. The primary antibody was diluted at 1/200 and incubated with the sample for 1 hour at 37°C. An Alexa Fluor 594 conjugated goat anti-rabbit IgG (H+L) antibody (Cat.# S0006), diluted at 1/600, was used as secondary antibody.



Western Blotting

Image 2. Western blot analysis of extracts from COLO205 cells using ATF1 antibody.



Western Blotting

Image 3. Western blot analysis of extracts from rat brain, using ATF1 Antibody.

Please check the [product details page](#) for more images. Overall 4 images are available for ABIN6256913.