



Datasheet for ABIN6256916
anti-ATPAF2 antibody



[Go to Product page](#)

2 Images

Overview

Quantity:	100 µL
Target:	ATPAF2
Reactivity:	Human, Mouse
Host:	Rabbit
Clonality:	Polyclonal
Conjugate:	This ATPAF2 antibody is un-conjugated
Application:	ELISA, Western Blotting (WB), Immunofluorescence (IF), Immunocytochemistry (ICC)

Product Details

Immunogen:	A synthesized peptide
Isotype:	IgG
Specificity:	ATPAF2 Antibody detects endogenous levels of total ATPAF2
Cross-Reactivity:	Human, Mouse (Murine)
Purification:	The antiserum was purified by peptide affinity chromatography using SulfoLink™ Coupling Resin (Thermo Fisher Scientific).

Target Details

Target:	ATPAF2
Alternative Name:	ATPAF2 (ATPAF2 Products)
Background:	Description: May play a role in the assembly of the F1 component of the mitochondrial ATP

Target Details

synthase (ATPase).

Gene: ATPAF2

Molecular Weight: 35 kDa

Gene ID: 91647

UniProt: [Q8N5M1](#)

Application Details

Application Notes: WB 1:500~1:1000, IF/ICC 1:100-1:500

Restrictions: For Research Use only

Handling

Format: Liquid

Concentration: 1 mg/mL

Buffer: Rabbit IgG in phosphate buffered saline , pH 7.4, 150 mM NaCl, 0.02 % sodium azide and 50 % glycerol.

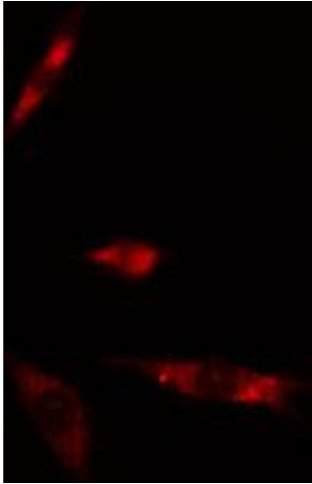
Preservative: Sodium azide

Precaution of Use: This product contains Sodium azide: a POISONOUS AND HAZARDOUS SUBSTANCE which should be handled by trained staff only.

Storage: -20 °C

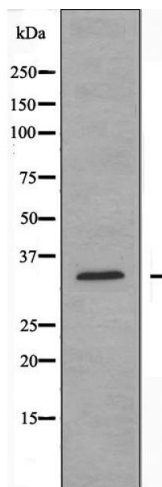
Storage Comment: Store at -20 °C.Stable for 12 months from date of receipt

Expiry Date: 12 months



Immunofluorescence (fixed cells)

Image 1. ABIN6274876 staining Hela cells by IF/ICC. The sample were fixed with PFA and permeabilized in 0.1% Triton X-100, then blocked in 10% serum for 45 minutes at 25°C. The primary antibody was diluted at 1/200 and incubated with the sample for 1 hour at 37°C. An Alexa Fluor 594 conjugated goat anti-rabbit IgG (H+L) antibody (Cat.# S0006), diluted at 1/600, was used as secondary antibody.



Western Blotting

Image 2. Western blot analysis of extracts from Jurkat cells, using ATPAF2 antibody.