

Datasheet for ABIN6256925  
**anti-AIM2 antibody (Internal Region)**[Go to Product page](#)

## 3 Images

## Overview

Quantity:	100 µL
Target:	AIM2
Binding Specificity:	Internal Region
Reactivity:	Human, Mouse
Host:	Rabbit
Clonality:	Polyclonal
Conjugate:	This AIM2 antibody is un-conjugated
Application:	Western Blotting (WB), ELISA, Immunofluorescence (IF), Immunocytochemistry (ICC)

## Product Details

Immunogen:	A synthesized peptide derived from human AIM2, corresponding to a region within the internal amino acids.
Isotype:	IgG
Specificity:	AIM2 Antibody detects endogenous levels of total AIM2.
Predicted Reactivity:	Horse
Purification:	The antiserum was purified by peptide affinity chromatography using SulfoLink™ Coupling Resin (Thermo Fisher Scientific).

## Target Details

Target:	AIM2
---------	------

## Target Details

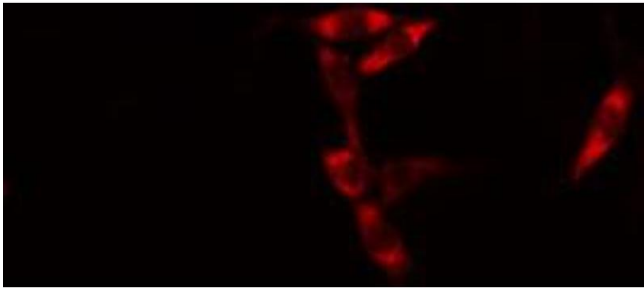
Alternative Name:	AIM2 ( <a href="#">AIM2 Products</a> )
Background:	<p>Description: Involved in innate immune response by recognizing cytosolic double-stranded DNA and inducing caspase-1-activating inflammasome formation in macrophages. Upon binding to DNA is thought to undergo oligomerization and to associate with PYCARD initiating the recruitment of caspase-1 precursor and processing of interleukin-1 beta and interleukin-18. Detects cytosolic dsDNA of viral and bacterial origin in a non-sequence-specific manner. Can also trigger PYCARD-dependent, caspase-1-independent cell death that involves caspase-8 (By similarity). Tumor suppressor which may act by repressing NF-kappa-B transcriptional activity.</p> <p>Gene: AIM2</p>
Molecular Weight:	39 kDa
Gene ID:	9447
UniProt:	<a href="#">O14862</a>
Pathways:	<a href="#">Activation of Innate immune Response</a> , <a href="#">Positive Regulation of Endopeptidase Activity</a> , <a href="#">Inflammasome</a>

## Application Details

Application Notes:	WB 1:500-1:1000, IF/ICC 1:100-1:500, ELISA(peptide) 1:20000-1:40000
Restrictions:	For Research Use only

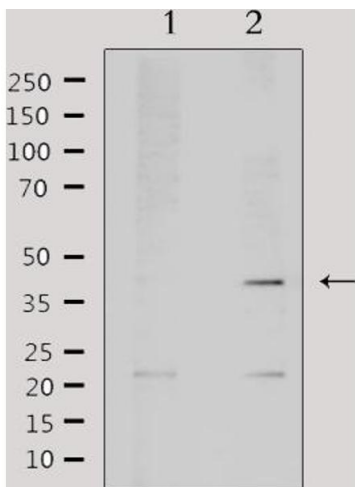
## Handling

Format:	Liquid
Concentration:	1 mg/mL
Buffer:	Rabbit IgG in phosphate buffered saline , pH 7.4, 150 mM NaCl, 0.02 % sodium azide and 50 % glycerol.
Preservative:	Sodium azide
Precaution of Use:	This product contains Sodium azide: a POISONOUS AND HAZARDOUS SUBSTANCE which should be handled by trained staff only.
Storage:	-20 °C
Storage Comment:	Store at -20 °C. Stable for 12 months from date of receipt.
Expiry Date:	12 months



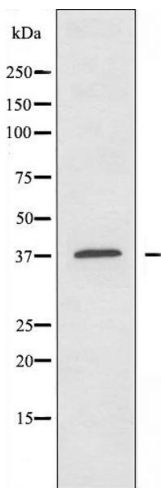
#### Immunofluorescence (fixed cells)

**Image 1.** ABIN6274586 staining HuvEc cells by IF/ICC. The sample were fixed with PFA and permeabilized in 0.1% Triton X-100, then blocked in 10% serum for 45 minutes at 25°C. The primary antibody was diluted at 1/200 and incubated with the sample for 1 hour at 37°C. An Alexa Fluor 594 conjugated goat anti-rabbit IgG (H+L) antibody (Cat.# S0006), diluted at 1/600, was used as secondary antibody.



#### Western Blotting

**Image 2.** Western blot analysis of extracts from mouse brain, using AIM2 Antibody. Lane 1 was treated with the antigen-specific peptide.



#### Western Blotting

**Image 3.** Western blot analysis of extracts from HUVEC cells, using AIM2 antibody.