



[Go to Product page](#)

Datasheet for ABIN6256956

## anti-Atrophin 1 antibody (N-Term)

### 2 Images

#### Overview

Quantity:	100 µL
Target:	Atrophin 1 (ATN1)
Binding Specificity:	N-Term
Reactivity:	Human, Mouse, Rat
Host:	Rabbit
Clonality:	Polyclonal
Conjugate:	This Atrophin 1 antibody is un-conjugated
Application:	Western Blotting (WB), ELISA, Immunocytochemistry (ICC), Immunofluorescence (IF)

#### Product Details

Immunogen:	A synthesized peptide derived from human Atrophin 1, corresponding to a region within N-terminal amino acids.
Isotype:	IgG
Specificity:	Atrophin 1 Antibody detects endogenous levels of total Atrophin 1.
Predicted Reactivity:	Pig,Bovine,Horse,Sheep,Rabbit,Dog,Xenopus
Purification:	The antiserum was purified by peptide affinity chromatography using SulfoLink™ Coupling Resin (Thermo Fisher Scientific).

#### Target Details

Target:	Atrophin 1 (ATN1)
---------	-------------------

## Target Details

---

Alternative Name:	ATN1 ( <a href="#">ATN1 Products</a> )
Background:	Description: Transcriptional corepressor. Recruits NR2E1 to repress transcription. Promotes vascular smooth cell (VSMC) migration and orientation (By similarity). Corepressor of MTG8 transcriptional repression. Has some intrinsic repression activity which is independent of the number of poly-Gln (polyQ) repeats. Gene: ATN1
Molecular Weight:	130 kDa
Gene ID:	1822
UniProt:	<a href="#">P54259</a>

## Application Details

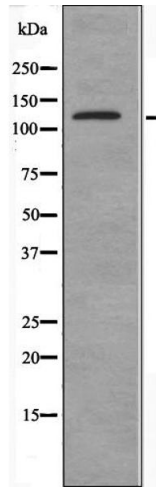
---

Application Notes:	WB 1:500-1:1000, IF/ICC 1:100-1:500, ELISA(peptide) 1:20000-1:40000
Restrictions:	For Research Use only

## Handling

---

Format:	Liquid
Concentration:	1 mg/mL
Buffer:	Rabbit IgG in phosphate buffered saline , pH 7.4, 150 mM NaCl, 0.02 % sodium azide and 50 % glycerol.
Preservative:	Sodium azide
Precaution of Use:	This product contains Sodium azide: a POISONOUS AND HAZARDOUS SUBSTANCE which should be handled by trained staff only.
Storage:	-20 °C
Storage Comment:	Store at -20 °C. Stable for 12 months from date of receipt.
Expiry Date:	12 months



### Western Blotting

**Image 1.** Western blot analysis of extracts from HeLa cells using ATN1 antibody.



### Immunofluorescence (fixed cells)

**Image 2.** ABIN6274895 staining HeLa cells by IF/ICC. The sample were fixed with PFA and permeabilized in 0.1% Triton X-100, then blocked in 10% serum for 45 minutes at 25°C. The primary antibody was diluted at 1/200 and incubated with the sample for 1 hour at 37°C. An Alexa Fluor 594 conjugated goat anti-rabbit IgG (H+L) antibody (Cat.# S0006), diluted at 1/600, was used as secondary antibody.