



[Go to Product page](#)

Datasheet for ABIN6256957

anti-Attractin antibody (N-Term)

2 Images

Overview

Quantity:	100 µL
Target:	Attractin (ATRN)
Binding Specificity:	N-Term
Reactivity:	Human
Host:	Rabbit
Clonality:	Polyclonal
Conjugate:	This Attractin antibody is un-conjugated
Application:	ELISA, Immunohistochemistry (IHC), Western Blotting (WB)

Product Details

Immunogen:	A synthesized peptide derived from human ATRN, corresponding to a region within N-terminal amino acids.
Isotype:	IgG
Specificity:	ATRN Antibody detects endogenous levels of total ATRN.
Predicted Reactivity:	Pig,Bovine,Rabbit,Dog
Purification:	The antiserum was purified by peptide affinity chromatography using SulfoLink™ Coupling Resin (Thermo Fisher Scientific).

Target Details

Target:	Attractin (ATRN)
---------	------------------

Target Details

Alternative Name: [ATRN \(ATRN Products\)](#)

Background: Description: Involved in the initial immune cell clustering during inflammatory response and may regulate chemotactic activity of chemokines. May play a role in melanocortin signaling pathways that regulate energy homeostasis and hair color. Low-affinity receptor for agouti (By similarity). Has a critical role in normal myelination in the central nervous system (By similarity).
Gene: ATRN

Molecular Weight: 159 kDa

Gene ID: 8455

UniProt: [075882](#)

Application Details

Application Notes: WB 1:500-1:2000, IHC 1:50-1:200, ELISA(peptide) 1:20000-1:40000

Restrictions: For Research Use only

Handling

Format: Liquid

Concentration: 1 mg/mL

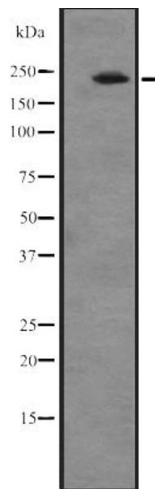
Buffer: Rabbit IgG in phosphate buffered saline, pH 7.4, 150 mM NaCl, 0.02 % sodium azide and 50 % glycerol.

Preservative: Sodium azide

Precaution of Use: This product contains Sodium azide: a POISONOUS AND HAZARDOUS SUBSTANCE which should be handled by trained staff only.

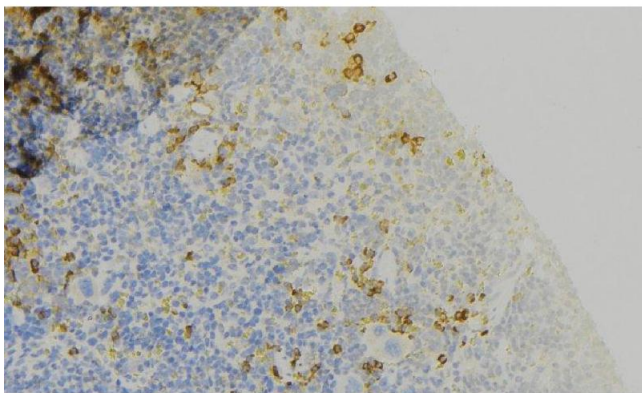
Storage: -20 °C

Expiry Date: 12 months



Western Blotting

Image 1. Western blot analysis of ATRN expression in A549 cell line lysates. The lane on the left is treated with the antigen-specific peptide.



Immunohistochemistry

Image 2. ABIN6273762 at 1/100 staining Human lymph node tissue by IHC-P. The sample was formaldehyde fixed and a heat mediated antigen retrieval step in citrate buffer was performed. The sample was then blocked and incubated with the antibody for 1.5 hours at 22°C. An HRP conjugated goat anti-rabbit antibody was used as the secondary