

Datasheet for ABIN6256959  
**anti-BCAS2 antibody (Internal Region)**[Go to Product page](#)

## 2 Images

## Overview

Quantity:	100 µL
Target:	BCAS2
Binding Specificity:	Internal Region
Reactivity:	Human, Mouse, Rat
Host:	Rabbit
Clonality:	Polyclonal
Conjugate:	This BCAS2 antibody is un-conjugated
Application:	Western Blotting (WB), ELISA, Immunofluorescence (IF), Immunocytochemistry (ICC)

## Product Details

Immunogen:	A synthesized peptide derived from human BCAS2, corresponding to a region within the internal amino acids.
Isotype:	IgG
Specificity:	BCAS2 Antibody detects endogenous levels of total BCAS2.
Predicted Reactivity:	Pig,Zebrafish,Bovine,Horse,Rabbit,Dog,Chicken,Xenopus
Purification:	The antiserum was purified by peptide affinity chromatography using SulfoLink™ Coupling Resin (Thermo Fisher Scientific).

## Target Details

Target:	BCAS2
---------	-------

## Target Details

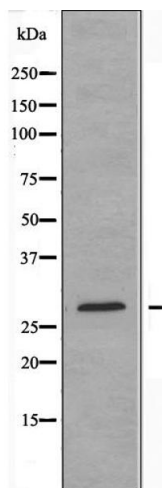
Alternative Name:	BCAS2 ( <a href="#">BCAS2 Products</a> )
Background:	<p>Description: Component of the PRP19-CDC5L complex that forms an integral part of the spliceosome and is required for activating pre-mRNA splicing. May have a scaffolding role in the spliceosome assembly as it contacts all other components of the core complex. The PRP19-CDC5L complex may also play a role in the response to DNA damage (DDR).</p> <p>Gene: BCAS2</p>
Molecular Weight:	27 kDa
Gene ID:	10286
UniProt:	<a href="#">O75934</a>

## Application Details

Application Notes:	WB 1:500-1:1000, IF/ICC 1:100-1:500, ELISA(peptide) 1:20000-1:40000
Restrictions:	For Research Use only

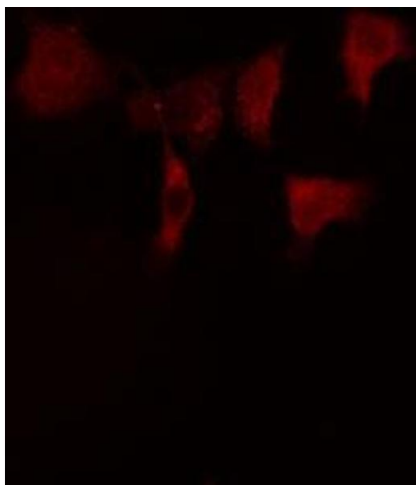
## Handling

Format:	Liquid
Concentration:	1 mg/mL
Buffer:	Rabbit IgG in phosphate buffered saline , pH 7.4, 150 mM NaCl, 0.02 % sodium azide and 50 % glycerol.
Preservative:	Sodium azide
Precaution of Use:	This product contains Sodium azide: a POISONOUS AND HAZARDOUS SUBSTANCE which should be handled by trained staff only.
Storage:	-20 °C
Storage Comment:	Store at -20 °C. Stable for 12 months from date of receipt.
Expiry Date:	12 months



### Western Blotting

**Image 1.** Western blot analysis of extracts from HeLa cells using BCAS2 antibody.



### Immunofluorescence (fixed cells)

**Image 2.** ABIN6274926 staining HeLa cells by IF/ICC. The sample were fixed with PFA and permeabilized in 0.1% Triton X-100, then blocked in 10% serum for 45 minutes at 25°C. The primary antibody was diluted at 1/200 and incubated with the sample for 1 hour at 37°C. An Alexa Fluor 594 conjugated goat anti-rabbit IgG (H+L) antibody (Cat.# S0006), diluted at 1/600, was used as secondary antibody.