

Datasheet for ABIN6257002

anti-GPR172B antibody (Internal Region)[Go to Product page](#)**1** Image

Overview

Quantity:	100 µL
Target:	GPR172B
Binding Specificity:	Internal Region
Reactivity:	Human
Host:	Rabbit
Clonality:	Polyclonal
Conjugate:	This GPR172B antibody is un-conjugated
Application:	ELISA, Western Blotting (WB), Immunofluorescence (IF), Immunocytochemistry (ICC)

Product Details

Immunogen:	A synthesized peptide derived from human PEVR2, corresponding to a region within the internal amino acids.
Isotype:	IgG
Specificity:	PEVR2 Antibody detects endogenous levels of total PEVR2.
Purification:	The antiserum was purified by peptide affinity chromatography using SulfoLink™ Coupling Resin (Thermo Fisher Scientific).

Target Details

Target:	GPR172B
Alternative Name:	SLC52A1 (GPR172B Products)

Target Details

Background:	Description: Riboflavin transporter. Riboflavin transport is Na ⁺ -independent but moderately pH-sensitive. Activity is strongly inhibited by riboflavin analogs, such as lumiflavin. Weakly inhibited by flavin adenine dinucleotide (FAD). In case of infection by retroviruses, acts as a cell receptor to retroviral envelopes similar to the porcine endogenous retrovirus (PERV-A). Gene: SLC52A1
-------------	---

Molecular Weight:	46 kDa
-------------------	--------

Gene ID:	55065
----------	-------

UniProt:	Q9NWF4
----------	------------------------

Application Details

Application Notes:	WB 1:500-1:1000, IF/ICC 1:100-1:500, ELISA(peptide) 1:20000-1:40000
--------------------	---

Restrictions:	For Research Use only
---------------	-----------------------

Handling

Format:	Liquid
---------	--------

Concentration:	1 mg/mL
----------------	---------

Buffer:	Rabbit IgG in phosphate buffered saline , pH 7.4, 150 mM NaCl, 0.02 % sodium azide and 50 % glycerol.
---------	---

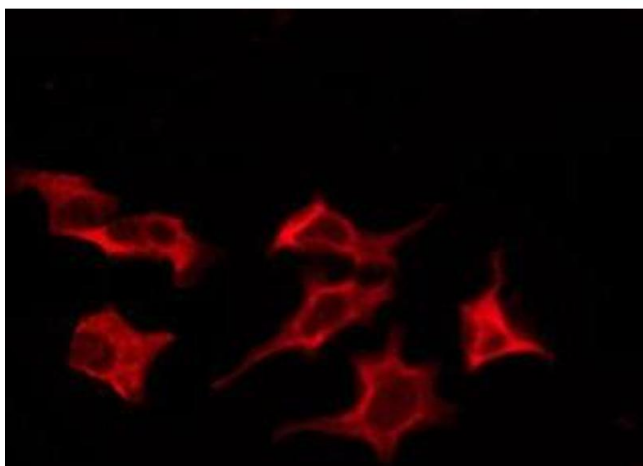
Preservative:	Sodium azide
---------------	--------------

Precaution of Use:	This product contains Sodium azide: a POISONOUS AND HAZARDOUS SUBSTANCE which should be handled by trained staff only.
--------------------	--

Storage:	-20 °C
----------	--------

Storage Comment:	Store at -20 °C. Stable for 12 months from date of receipt.
------------------	---

Expiry Date:	12 months
--------------	-----------



Immunofluorescence (fixed cells)

Image 1. ABIN6276204 staining LOVO by IF/ICC. The sample were fixed with PFA and permeabilized in 0.1% Triton X-100, then blocked in 10% serum for 45 minutes at 25°C. The primary antibody was diluted at 1/200 and incubated with the sample for 1 hour at 37°C. An Alexa Fluor 594 conjugated goat anti-rabbit IgG (H+L) Ab, diluted at 1/600, was used as the secondary antibody.