



Datasheet for ABIN6257006
anti-NADAP antibody (C-Term)



[Go to Product page](#)

2 Images

Overview

Quantity:	100 µL
Target:	NADAP (SLC4A1AP)
Binding Specificity:	C-Term
Reactivity:	Human, Mouse
Host:	Rabbit
Clonality:	Polyclonal
Conjugate:	This NADAP antibody is un-conjugated
Application:	Western Blotting (WB), ELISA, Immunofluorescence (IF), Immunocytochemistry (ICC)

Product Details

Immunogen:	A synthesized peptide derived from human NADAP, corresponding to a region within C-terminal amino acids.
Isotype:	IgG
Specificity:	NADAP Antibody detects endogenous levels of total NADAP.
Purification:	The antiserum was purified by peptide affinity chromatography using SulfoLink™ Coupling Resin (Thermo Fisher Scientific).

Target Details

Target:	NADAP (SLC4A1AP)
Alternative Name:	SLC4A1AP (SLC4A1AP Products)

Target Details

Background: Description: PubMed:15764369 initially suggested a role in targeting SLC4A1 (kidney anion exchanger 1) to the plasma membrane, it does not seem to do so as it does not interact with SLC4A1 and has no effect on SLC4A1 trafficking.
Gene: SLC4A1AP

Molecular Weight: 85 kDa

Gene ID: 22950

UniProt: [Q9BWU0](#)

Application Details

Application Notes: WB 1:500-1:1000, IF/ICC 1:100-1:500, ELISA(peptide) 1:20000-1:40000

Restrictions: For Research Use only

Handling

Format: Liquid

Concentration: 1 mg/mL

Buffer: Rabbit IgG in phosphate buffered saline , pH 7.4, 150 mM NaCl, 0.02 % sodium azide and 50 % glycerol.

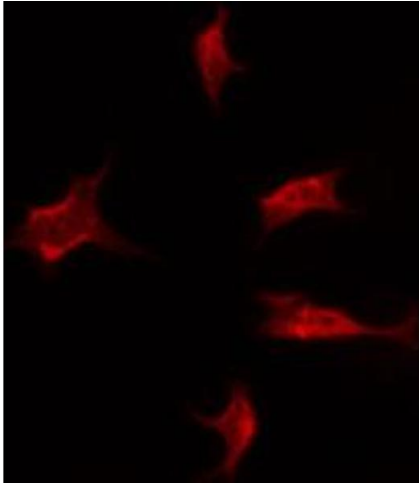
Preservative: Sodium azide

Precaution of Use: This product contains Sodium azide: a POISONOUS AND HAZARDOUS SUBSTANCE which should be handled by trained staff only.

Storage: -20 °C

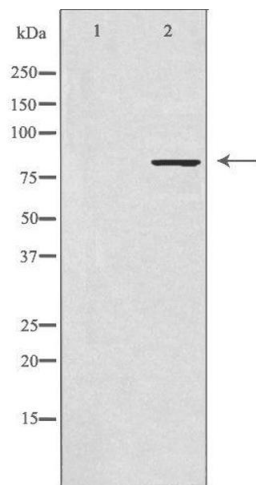
Storage Comment: Store at -20 °C. Stable for 12 months from date of receipt.

Expiry Date: 12 months



Immunofluorescence (fixed cells)

Image 1. ABIN6274495 staining HUVEC by IF/ICC. The samples were fixed with PFA and permeabilized in 0.1% Triton X-100, then blocked in 10% serum for 45 minutes at 25°C. The primary antibody was diluted at 1/200 and incubated with the sample for 1 hour at 37°C. An Alexa Fluor 594 conjugated goat anti-rabbit IgG (H+L) Ab, diluted at 1/600, was used as the secondary antibody.



Western Blotting

Image 2. Western blot analysis of extracts from HUVEC cells, using NADAP antibody. The lane on the left is treated with the antigen-specific peptide.