

Datasheet for ABIN6257015  
**anti-FASTKD3 antibody (N-Term)**[Go to Product page](#)

## 2 Images

## Overview

Quantity:	100 µL
Target:	FASTKD3
Binding Specificity:	N-Term
Reactivity:	Human
Host:	Rabbit
Clonality:	Polyclonal
Conjugate:	This FASTKD3 antibody is un-conjugated
Application:	Western Blotting (WB), ELISA, Immunohistochemistry (IHC), Immunofluorescence (IF), Immunocytochemistry (ICC)

## Product Details

Immunogen:	A synthesized peptide derived from human FAKD3, corresponding to a region within N-terminal amino acids.
Isotype:	IgG
Specificity:	FAKD3 Antibody detects endogenous levels of total FAKD3.
Predicted Reactivity:	Pig,Bovine,Sheep
Purification:	The antiserum was purified by peptide affinity chromatography using SulfoLink™ Coupling Resin (Thermo Fisher Scientific).

## Target Details

Target:	FASTKD3
---------	---------

## Target Details

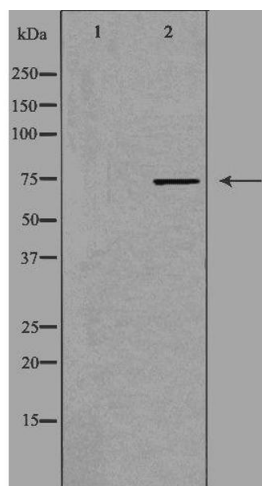
Alternative Name:	FASTKD3 ( <a href="#">FASTKD3 Products</a> )
Background:	<p>Description: Required for normal mitochondrial respiration (PubMed:20869947). Increases steady-state levels and half-lives of a subset of mature mitochondrial mRNAs MT-ND2, MT-ND3, MT-CYTB, MT-CO2, and MT-ATP8/6. Promotes MT-CO1 mRNA translation and increases mitochondrial complex IV assembly and activity (PubMed:27789713).</p> <p>Gene: FASTKD3</p>
Molecular Weight:	75 kDa
Gene ID:	79072
UniProt:	<a href="#">Q14CZ7</a>

## Application Details

Application Notes:	WB 1:500-1:1000, IF/ICC 1:100-1:500, IHC 1:50-1:200, ELISA(peptide) 1:20000-1:40000
Restrictions:	For Research Use only

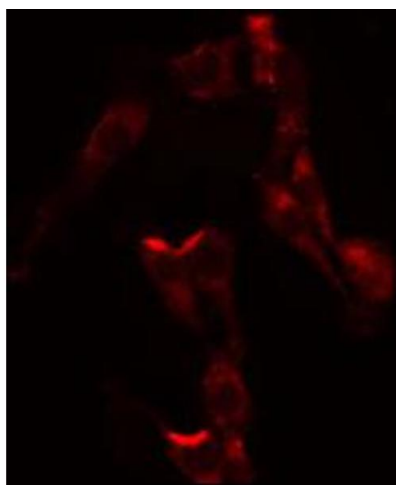
## Handling

Format:	Liquid
Concentration:	1 mg/mL
Buffer:	Rabbit IgG in phosphate buffered saline , pH 7.4, 150 mM NaCl, 0.02 % sodium azide and 50 % glycerol.
Preservative:	Sodium azide
Precaution of Use:	This product contains Sodium azide: a POISONOUS AND HAZARDOUS SUBSTANCE which should be handled by trained staff only.
Storage:	-20 °C
Storage Comment:	Store at -20 °C. Stable for 12 months from date of receipt.
Expiry Date:	12 months



### Western Blotting

**Image 1.** Western blot analysis of extracts from HepG2 cells, using FAKD3 antibody. The lane on the left is treated with the antigen-specific peptide.



### Immunofluorescence (fixed cells)

**Image 2.** ABIN6274358 staining HepG2 by IF/ICC. The sample were fixed with PFA and permeabilized in 0.1% Triton X-100, then blocked in 10% serum for 45 minutes at 25°C. The primary antibody was diluted at 1/200 and incubated with the sample for 1 hour at 37°C. An Alexa Fluor 594 conjugated goat anti-rabbit IgG (H+L) Ab, diluted at 1/600, was used as the secondary antibody.