



[Go to Product page](#)

Datasheet for ABIN6257018

anti-PRKACG antibody

3 Images

Overview

Quantity:	100 µL
Target:	PRKACG
Reactivity:	Human, Rat
Host:	Rabbit
Clonality:	Polyclonal
Conjugate:	This PRKACG antibody is un-conjugated
Application:	Western Blotting (WB), ELISA, Immunofluorescence (IF), Immunocytochemistry (ICC)

Product Details

Immunogen:	A synthesized peptide
Isotype:	IgG
Specificity:	KAPCG Antibody detects endogenous levels of total KAPCG
Cross-Reactivity:	Human, Rat (Rattus)
Purification:	The antiserum was purified by peptide affinity chromatography using SulfoLink™ Coupling Resin (Thermo Fisher Scientific).

Target Details

Target:	PRKACG
Alternative Name:	KAPCG (PRKACG Products)
Background:	Description: Phosphorylates a large number of substrates in the cytoplasm and the nucleus.

Target Details

Gene: PRKACG

Molecular Weight: 40 kDa

Gene ID: 5568

UniProt: [P22612](#)

Pathways: [AMPK Signaling](#), [Hedgehog Signaling](#), [Thyroid Hormone Synthesis](#), [G-protein mediated Events](#), [Interaction of EGFR with phospholipase C-gamma](#), [Lipid Metabolism](#)

Application Details

Application Notes: WB 1:500~1:1000, IF/ICC 1:100-1:500

Restrictions: For Research Use only

Handling

Format: Liquid

Concentration: 1 mg/mL

Buffer: Rabbit IgG in phosphate buffered saline , pH 7.4, 150 mM NaCl, 0.02 % sodium azide and 50 % glycerol.

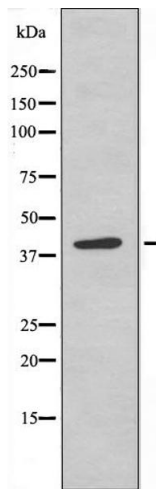
Preservative: Sodium azide

Precaution of Use: This product contains Sodium azide: a POISONOUS AND HAZARDOUS SUBSTANCE which should be handled by trained staff only.

Storage: -20 °C

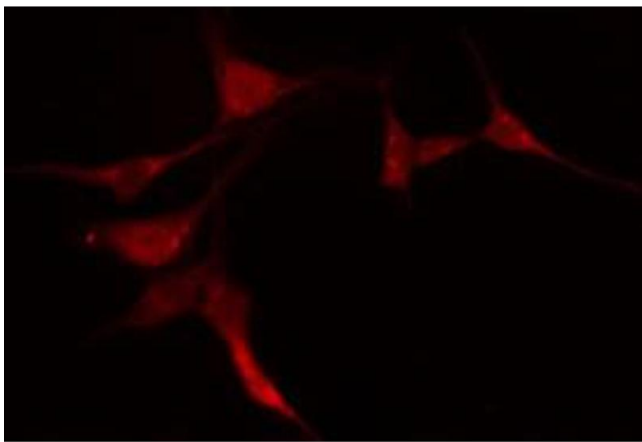
Storage Comment: Store at -20 °C. Stable for 12 months from date of receipt

Expiry Date: 12 months



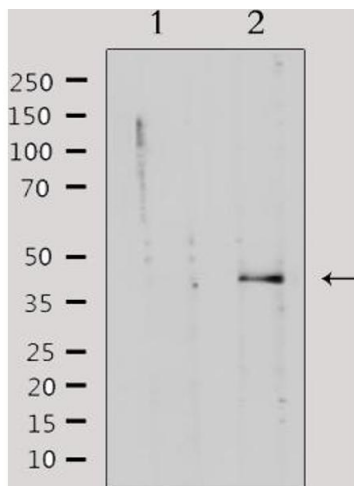
Western Blotting

Image 1. Western blot analysis of extracts from COLO205 cells, using KAPCG antibody.



Immunofluorescence (fixed cells)

Image 2. ABIN6274200 staining COLO205 cells by IF/ICC. The sample were fixed with PFA and permeabilized in 0.1% Triton X-100, then blocked in 10% serum for 45 minutes at 25°C. The primary antibody was diluted at 1/200 and incubated with the sample for 1 hour at 37°C. An Alexa Fluor 594 conjugated goat anti-rabbit IgG (H+L) antibody (Cat.# S0006), diluted at 1/600, was used as secondary antibody.



Western Blotting

Image 3. Western blot analysis of extracts from rat muscle, using KAPCG Antibody. Lane 1 was treated with the antigen-specific peptide.