

Datasheet for ABIN6257023

anti-DYRK1B antibody (Internal Region)

3 Images

[Go to Product page](#)

Overview

Quantity:	100 µL
Target:	DYRK1B
Binding Specificity:	Internal Region
Reactivity:	Human, Mouse, Rat
Host:	Rabbit
Clonality:	Polyclonal
Conjugate:	This DYRK1B antibody is un-conjugated
Application:	Western Blotting (WB), ELISA, Immunohistochemistry (IHC), Immunofluorescence (IF), Immunocytochemistry (ICC)

Product Details

Immunogen:	A synthesized peptide derived from human DYR1B, corresponding to a region within the internal amino acids.
Isotype:	IgG
Specificity:	DYR1B Antibody detects endogenous levels of total DYR1B.
Predicted Reactivity:	Pig,Bovine,Rabbit,Dog
Purification:	The antiserum was purified by peptide affinity chromatography using SulfoLink™ Coupling Resin (Thermo Fisher Scientific).

Target Details

Target:	DYRK1B
---------	--------

Target Details

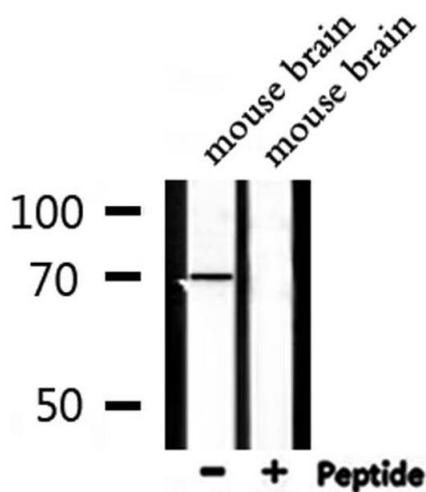
Alternative Name:	DYRK1B (DYRK1B Products)
Background:	<p>Description: Dual-specificity kinase which possesses both serine/threonine and tyrosine kinase activities. Enhances the transcriptional activity of TCF1/HNF1A and FOXO1. Inhibits epithelial cell migration. Mediates colon carcinoma cell survival in mitogen-poor environments. Inhibits the SHH and WNT1 pathways, thereby enhancing adipogenesis. In addition, promotes expression of the gluconeogenic enzyme glucose-6-phosphatase (G6PC).</p> <p>Gene: DYRK1B</p>
Molecular Weight:	70 kDa
Gene ID:	9149
UniProt:	Q9Y463

Application Details

Application Notes:	WB 1:500-1:1000, IF/ICC 1:100-1:500, IHC 1:50-1:200, ELISA(peptide) 1:20000-1:40000
Restrictions:	For Research Use only

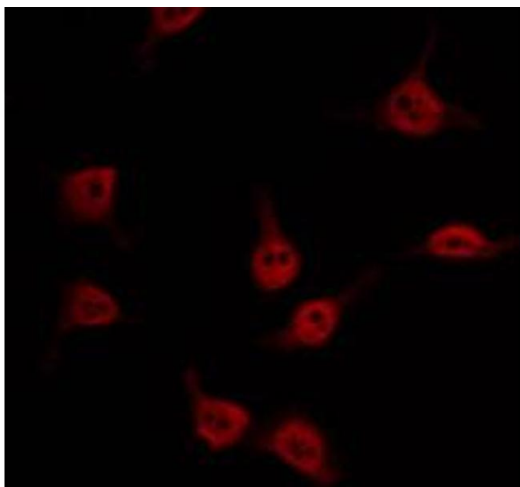
Handling

Format:	Liquid
Concentration:	1 mg/mL
Buffer:	Rabbit IgG in phosphate buffered saline , pH 7.4, 150 mM NaCl, 0.02 % sodium azide and 50 % glycerol.
Preservative:	Sodium azide
Precaution of Use:	This product contains Sodium azide: a POISONOUS AND HAZARDOUS SUBSTANCE which should be handled by trained staff only.
Storage:	-20 °C
Storage Comment:	Store at -20 °C. Stable for 12 months from date of receipt.
Expiry Date:	12 months



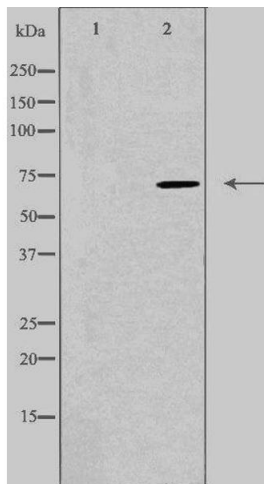
Western Blotting

Image 1. Western blot analysis of extracts from mouse brain, using DYR1B Antibody.



Immunofluorescence (fixed cells)

Image 2. ABIN6274557 staining Hela by IF/ICC. The sample were fixed with PFA and permeabilized in 0.1% Triton X-100, then blocked in 10% serum for 45 minutes at 25°C. The primary antibody was diluted at 1/200 and incubated with the sample for 1 hour at 37°C. An Alexa Fluor 594 conjugated goat anti-rabbit IgG (H+L) Ab, diluted at 1/600, was used as the secondary antibody.



Western Blotting

Image 3. Western blot analysis of extracts from Jurkat cells, using DYR1B antibody. The lane on the left is treated with the antigen-specific peptide.