

Datasheet for ABIN6257024
anti-DYRK1A antibody (N-Term)

3 Images

[Go to Product page](#)

Overview

| | |
|----------------------|--|
| Quantity: | 100 µL |
| Target: | DYRK1A |
| Binding Specificity: | N-Term |
| Reactivity: | Human, Mouse, Rat |
| Host: | Rabbit |
| Clonality: | Polyclonal |
| Conjugate: | This DYRK1A antibody is un-conjugated |
| Application: | Western Blotting (WB), ELISA, Immunofluorescence (IF), Immunocytochemistry (ICC) |

Product Details

| | |
|-----------------------|---|
| Immunogen: | A synthesized peptide derived from human DYRK1A, corresponding to a region within N-terminal amino acids. |
| Isotype: | IgG |
| Specificity: | DYRK1A Antibody detects endogenous levels of total DYRK1A. |
| Predicted Reactivity: | Pig,Bovine,Horse,Sheep,Dog,Chicken |
| Purification: | The antiserum was purified by peptide affinity chromatography using SulfoLink™ Coupling Resin (Thermo Fisher Scientific). |

Target Details

| | |
|---------|--------|
| Target: | DYRK1A |
|---------|--------|

Target Details

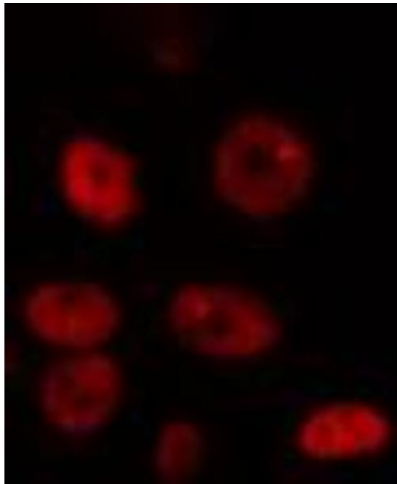
| | |
|-------------------|---|
| Alternative Name: | DYRK1A (DYRK1A Products) |
| Background: | <p>Description: Dual-specificity kinase which possesses both serine/threonine and tyrosine kinase activities. May play a role in a signaling pathway regulating nuclear functions of cell proliferation. Modulates alternative splicing by phosphorylating the splice factor SRSF6 (By similarity). Exhibits a substrate preference for proline at position P+1 and arginine at position P-3. Has pro-survival function and negatively regulates the apoptotic process. Promotes cell survival upon genotoxic stress through phosphorylation of SIRT1. This in turn inhibits TP53 activity and apoptosis (By similarity).</p> <p>Gene: DYRK1A</p> |
| Molecular Weight: | 90 kDa |
| Gene ID: | 1859 |
| UniProt: | Q13627 |
| Pathways: | Mitotic G1-G1/S Phases |

Application Details

| | |
|--------------------|---|
| Application Notes: | WB 1:500-1:1000, IF/ICC 1:100-1:500, ELISA(peptide) 1:20000-1:40000 |
| Restrictions: | For Research Use only |

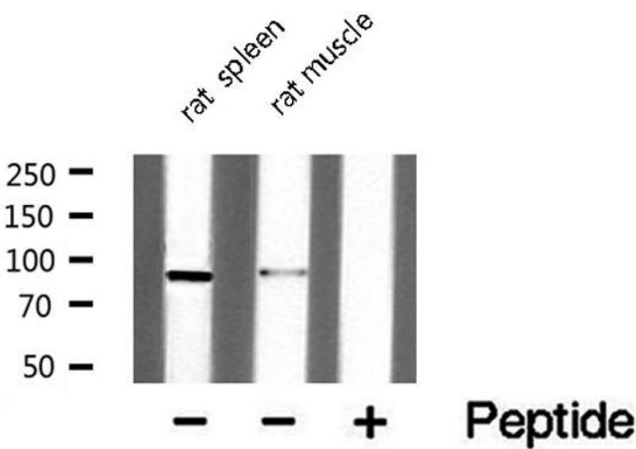
Handling

| | |
|--------------------|--|
| Format: | Liquid |
| Concentration: | 1 mg/mL |
| Buffer: | Rabbit IgG in phosphate buffered saline , pH 7.4, 150 mM NaCl, 0.02 % sodium azide and 50 % glycerol. |
| Preservative: | Sodium azide |
| Precaution of Use: | This product contains Sodium azide: a POISONOUS AND HAZARDOUS SUBSTANCE which should be handled by trained staff only. |
| Storage: | -20 °C |
| Storage Comment: | Store at -20 °C. Stable for 12 months from date of receipt. |
| Expiry Date: | 12 months |



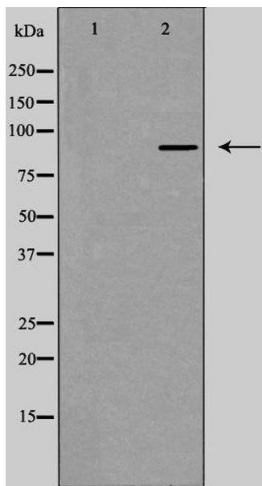
Immunofluorescence (fixed cells)

Image 1. ABIN6274347 staining HepG2 cells by IF/ICC. The sample were fixed with PFA and permeabilized in 0.1% Triton X-100, then blocked in 10% serum for 45 minutes at 25°C. The primary antibody was diluted at 1/200 and incubated with the sample for 1 hour at 37°C. An Alexa Fluor 594 conjugated goat anti-rabbit IgG (H+L) antibody (Cat.# S0006), diluted at 1/600, was used as secondary antibody.



Western Blotting

Image 2. Western blot analysis of extracts from various tissue, using DYR1A antibody.



Western Blotting

Image 3. Western blot analysis of extracts from HepG2 cells, using DYR1A antibody. The lane on the left is treated with the antigen-specific peptide.