

Datasheet for ABIN6257035

anti-Thrombomodulin antibody (C-Term)[Go to Product page](#)

4 Images

Overview

Quantity:	100 µL
Target:	Thrombomodulin (THBD)
Binding Specificity:	C-Term
Reactivity:	Human, Rat, Mouse
Host:	Rabbit
Clonality:	Polyclonal
Conjugate:	This Thrombomodulin antibody is un-conjugated
Application:	Western Blotting (WB), ELISA, Immunofluorescence (IF), Immunocytochemistry (ICC)

Product Details

Immunogen:	A synthesized peptide derived from human THBD, corresponding to a region within C-terminal amino acids.
Isotype:	IgG
Specificity:	THBD Antibody detects endogenous levels of total THBD.
Predicted Reactivity:	Bovine, Sheep, Rabbit, Dog
Purification:	The antiserum was purified by peptide affinity chromatography using SulfoLink™ Coupling Resin (Thermo Fisher Scientific).

Target Details

Target:	Thrombomodulin (THBD)
---------	-----------------------

Target Details

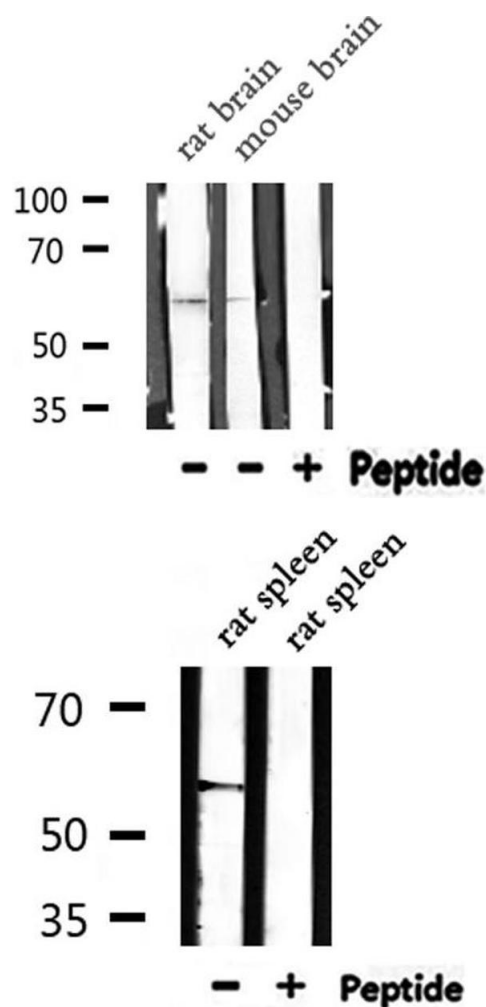
Alternative Name:	THBD (THBD Products)
Background:	<p>Description: Thrombomodulin is a specific endothelial cell receptor that forms a 1:1 stoichiometric complex with thrombin. This complex is responsible for the conversion of protein C to the activated protein C (protein Ca). Once evolved, protein Ca scissions the activated cofactors of the coagulation mechanism, factor Va and factor VIIIa, and thereby reduces the amount of thrombin generated.</p> <p>Gene: THBD</p>
Molecular Weight:	60 kDa
Gene ID:	7056
UniProt:	P07204

Application Details

Application Notes:	WB 1:500-1:1000, IF/ICC 1:100-1:500, ELISA(peptide) 1:20000-1:40000
Restrictions:	For Research Use only

Handling

Format:	Liquid
Concentration:	1 mg/mL
Buffer:	Rabbit IgG in phosphate buffered saline , pH 7.4, 150 mM NaCl, 0.02 % sodium azide and 50 % glycerol.
Preservative:	Sodium azide
Precaution of Use:	This product contains Sodium azide: a POISONOUS AND HAZARDOUS SUBSTANCE which should be handled by trained staff only.
Storage:	-20 °C
Storage Comment:	Store at -20 °C. Stable for 12 months from date of receipt.
Expiry Date:	12 months

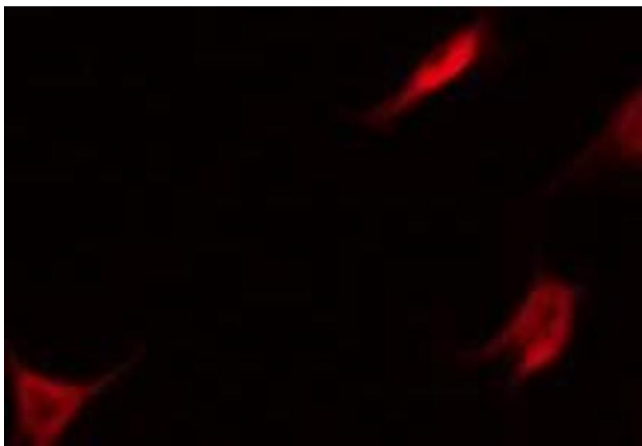


Western Blotting

Image 1. Western blot analysis of THBD expression in various lysates

Western Blotting

Image 2. Western blot analysis of extracts from rat brain, mouse brain, rat spleen, using THBD Antibody.



Immunofluorescence (fixed cells)

Image 3. ABIN6275629 staining Hela by IF/ICC. The sample were fixed with PFA and permeabilized in 0.1% Triton X-100, then blocked in 10% serum for 45 minutes at 25°C. The primary antibody was diluted at 1/200 and incubated with the sample for 1 hour at 37°C. An Alexa Fluor 594 conjugated goat anti-rabbit IgG (H+L) Ab, diluted at 1/600, was used as the secondary antibody

Please check the [product details page](#) for more images. Overall 4 images are available for ABIN6257035.