



[Go to Product page](#)

Datasheet for ABIN6257079  
**anti-ANKRD20A1 antibody**

2 Images

### Overview

|              |  |
|--------------|--|
| Quantity:    | 100 µL   |
| Target:      | ANKRD20A1  |
| Reactivity:  | Human, Mouse   |
| Host:        | Rabbit   |
| Clonality:   | Polyclonal   |
| Conjugate:   | This ANKRD20A1 antibody is un-conjugated   |
| Application: | Western Blotting (WB), ELISA, Immunocytochemistry (ICC), Immunofluorescence (IF) |

### Product Details

|                   |   |
|-------------------|---|
| Immunogen:        | A synthesized peptide   |
| Isotype:          | IgG   |
| Specificity:      | A20A1 Antibody detects endogenous levels of total A20A1   |
| Cross-Reactivity: | Human, Mouse (Murine)   |
| Purification:     | The antiserum was purified by peptide affinity chromatography using SulfoLink™ Coupling Resin (Thermo Fisher Scientific). |

### Target Details

|                   |  |
|-------------------|--|
| Target:           | ANKRD20A1                                    |
| Alternative Name: | A20A1 ( <a href="#">ANKRD20A1 Products</a> ) |
| Background:       | Gene: ANKRD20A1                              |

## Target Details

Molecular Weight: 95 kDa

Gene ID: 84210

UniProt: [Q5TYW2](#)

## Application Details

Application Notes: WB 1:500~1:1000, IF/ICC 1:100-1:500

Restrictions: For Research Use only

## Handling

Format: Liquid

Concentration: 1 mg/mL

Buffer: Rabbit IgG in phosphate buffered saline , pH 7.4, 150 mM NaCl, 0.02 % sodium azide and 50 % glycerol.

Preservative: Sodium azide

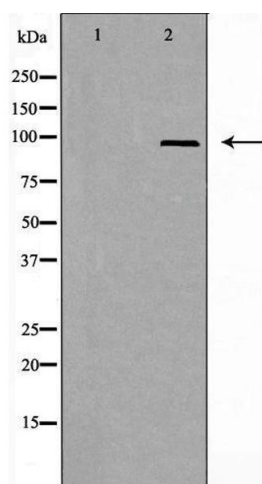
Precaution of Use: This product contains Sodium azide: a POISONOUS AND HAZARDOUS SUBSTANCE which should be handled by trained staff only.

Storage: -20 °C

Storage Comment: Store at -20 °C. Stable for 12 months from date of receipt

Expiry Date: 12 months

## Images



### Western Blotting

**Image 1.** Western blot analysis of extracts from 3T3 cells, using A20A1 antibody. The lane on the left is treated with the antigen-specific peptide.



#### Immunofluorescence (fixed cells)

**Image 2.** ABIN6275722 staining NIH-3T3 by IF/ICC. The sample were fixed with PFA and permeabilized in 0.1% Triton X-100, then blocked in 10% serum for 45 minutes at 25°C. The primary antibody was diluted at 1/200 and incubated with the sample for 1 hour at 37°C. An Alexa Fluor 594 conjugated goat anti-rabbit IgG (H+L) Ab, diluted at 1/600, was used as the secondary antibody