

Datasheet for ABIN6257084

anti-CPXCR1 antibody[Go to Product page](#)**2** Images

Overview

Quantity:	100 µL
Target:	CPXCR1
Reactivity:	Human, Rat
Host:	Rabbit
Clonality:	Polyclonal
Conjugate:	This CPXCR1 antibody is un-conjugated
Application:	Western Blotting (WB), ELISA, Immunohistochemistry (IHC)

Product Details

Immunogen:	A synthesized peptide
Isotype:	IgG
Specificity:	CPXCR1 antibody detects endogenous levels of total CPXCR1
Cross-Reactivity:	Human, Rat (Rattus)
Purification:	The antiserum was purified by peptide affinity chromatography using SulfoLink™ Coupling Resin (Thermo Fisher Scientific).

Target Details

Target:	CPXCR1
Alternative Name:	CPXCR1 (CPXCR1 Products)
Background:	Gene: CPXCR1

Target Details

Molecular Weight:	35 kDa
Gene ID:	53336
UniProt:	Q8N123

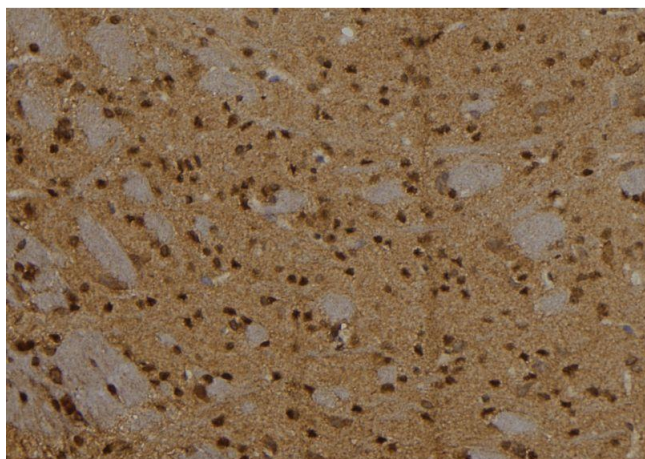
Application Details

Application Notes:	WB 1:500-1:2000 IHC 1:50-1:200
Restrictions:	For Research Use only

Handling

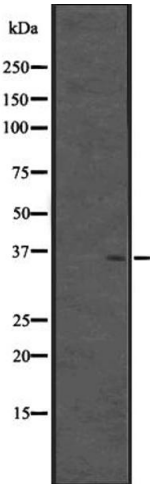
Format:	Liquid
Concentration:	1 mg/mL
Buffer:	Rabbit IgG in phosphate buffered saline, pH 7.4, 150 mM NaCl, 0.02 % sodium azide and 50 % glycerol.
Preservative:	Sodium azide
Precaution of Use:	This product contains Sodium azide: a POISONOUS AND HAZARDOUS SUBSTANCE which should be handled by trained staff only.

Images



Immunohistochemistry

Image 1. ABIN6273565 at 1/100 staining Rat brain tissue by IHC-P. The sample was formaldehyde fixed and a heat mediated antigen retrieval step in citrate buffer was performed. The sample was then blocked and incubated with the antibody for 1.5 hours at 22°C. An HRP conjugated goat anti-rabbit antibody was used as the secondary.



Western Blotting

Image 2. Western blot analysis of CPXCR1 expression in Fetal brain lysate (Human) ;,The lane on the left is treated with the antigen-specific peptide.