



[Go to Product page](#)

Datasheet for ABIN6257093
anti-CX3CR1 antibody (N-Term)

2 Images

Overview

Quantity:	100 µL
Target:	CX3CR1
Binding Specificity:	N-Term
Reactivity:	Human, Mouse, Rat
Host:	Rabbit
Clonality:	Polyclonal
Conjugate:	This CX3CR1 antibody is un-conjugated
Application:	Western Blotting (WB), ELISA, Immunofluorescence (IF), Immunocytochemistry (ICC)

Product Details

Immunogen:	A synthesized peptide derived from human CX3CR1, corresponding to a region within N-terminal amino acids.
Isotype:	IgG
Specificity:	CX3CR1 Antibody detects endogenous levels of total CX3CR1.
Predicted Reactivity:	Bovine,Rabbit
Purification:	The antiserum was purified by peptide affinity chromatography using SulfoLink™ Coupling Resin (Thermo Fisher Scientific).

Target Details

Target:	CX3CR1
---------	--------

Target Details

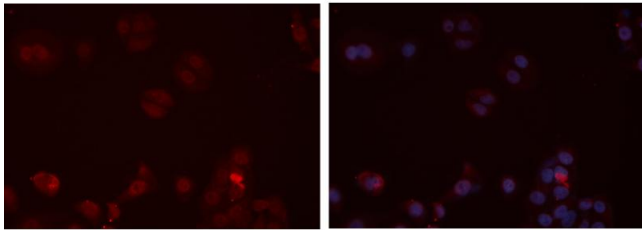
Alternative Name:	CX3CR1 (CX3CR1 Products)
Background:	<p>Description: Receptor for the CX3C chemokine fractalkine (CX3CL1), binds to CX3CL1 and mediates both its adhesive and migratory functions (PubMed:9390561, PubMed:23125415). Acts as coreceptor with CD4 for HIV-1 virus envelope protein (in vitro) (PubMed:9726990). Isoform 2 and isoform 3 seem to be more potent HIV-1 coreceptors than isoform 1 (PubMed:14607932).</p> <p>Gene: CX3CR1</p>
Molecular Weight:	50 kDa
Gene ID:	1524
UniProt:	P49238
Pathways:	Cellular Response to Molecule of Bacterial Origin

Application Details

Application Notes:	WB 1:500-1:2000, IF/ICC 1:100-1:500, ELISA(peptide) 1:20000-1:40000
Restrictions:	For Research Use only

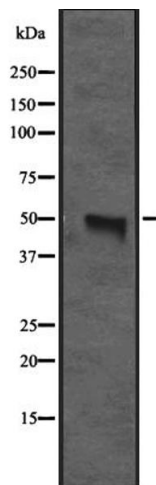
Handling

Format:	Liquid
Concentration:	1 mg/mL
Buffer:	Rabbit IgG in phosphate buffered saline, pH 7.4, 150 mM NaCl, 0.02 % sodium azide and 50 % glycerol.
Preservative:	Sodium azide
Precaution of Use:	This product contains Sodium azide: a POISONOUS AND HAZARDOUS SUBSTANCE which should be handled by trained staff only.
Storage:	-20 °C
Expiry Date:	12 months



Immunofluorescence (fixed cells)

Image 1. ABIN6273472 staining HeLa cells by IF/ICC. The sample were fixed with PFA and permeabilized in 0.1% Triton X-100, then blocked in 10% serum for 45 minutes at 25°C. The primary antibody was diluted at 1/200 and incubated with the sample for 1 hour at 37°C. An Alexa Fluor 594 conjugated goat anti-rabbit IgG (H+L) antibody (Cat.# S0006), diluted at 1/600 was used as secondary antibody.



Western Blotting

Image 2. Western blot analysis of CX3CR1 expression in Human spleen lysate, The lane on the left is treated with the antigen-specific peptide.