

Datasheet for ABIN6257098  
**anti-CEP55 antibody (C-Term)**[Go to Product page](#)

## 3 Images

## Overview

Quantity:	100 µL
Target:	CEP55
Binding Specificity:	C-Term
Reactivity:	Human
Host:	Rabbit
Clonality:	Polyclonal
Conjugate:	This CEP55 antibody is un-conjugated
Application:	Western Blotting (WB), ELISA, Immunohistochemistry (IHC)

## Product Details

Immunogen:	A synthesized peptide derived from human CEP55, corresponding to a region within C-terminal amino acids.
Isotype:	IgG
Specificity:	CEP55 Antibody detects endogenous levels of total CEP55.
Purification:	The antiserum was purified by peptide affinity chromatography using SulfoLink™ Coupling Resin (Thermo Fisher Scientific).

## Target Details

Target:	CEP55
Alternative Name:	CEP55 ( <a href="#">CEP55 Products</a> )

## Target Details

Background:	Description: Plays a role in mitotic exit and cytokinesis (PubMed:16198290, PubMed:17853893). Recruits PDCD6IP and TSG101 to midbody during cytokinesis. Required for successful completion of cytokinesis (PubMed:17853893). Not required for microtubule nucleation (PubMed:16198290). Plays a role in the development of the brain and kidney (PubMed:28264986). Gene: CEP55
-------------	--

Molecular Weight:	54 kDa
-------------------	--------

Gene ID:	55165
----------	-------

UniProt:	<a href="#">Q53EZ4</a>
----------	------------------------

## Application Details

Application Notes:	WB 1:500-1:1000, IHC 1:50-1:200, ELISA(peptide) 1:20000-1:40000
--------------------	---

Restrictions:	For Research Use only
---------------	-----------------------

## Handling

Format:	Liquid
---------	--------

Concentration:	1 mg/mL
----------------	---------

Buffer:	Rabbit IgG in phosphate buffered saline , pH 7.4, 150 mM NaCl, 0.02 % sodium azide and 50 % glycerol.
---------	---

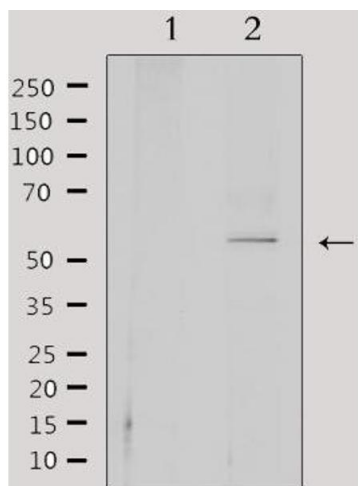
Preservative:	Sodium azide
---------------	--------------

Precaution of Use:	This product contains Sodium azide: a POISONOUS AND HAZARDOUS SUBSTANCE which should be handled by trained staff only.
--------------------	--

Storage:	-20 °C
----------	--------

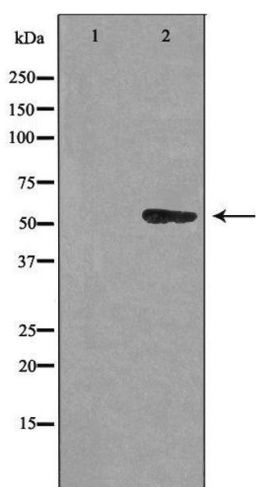
Storage Comment:	Store at -20 °C. Stable for 12 months from date of receipt.
------------------	---

Expiry Date:	12 months
--------------	-----------



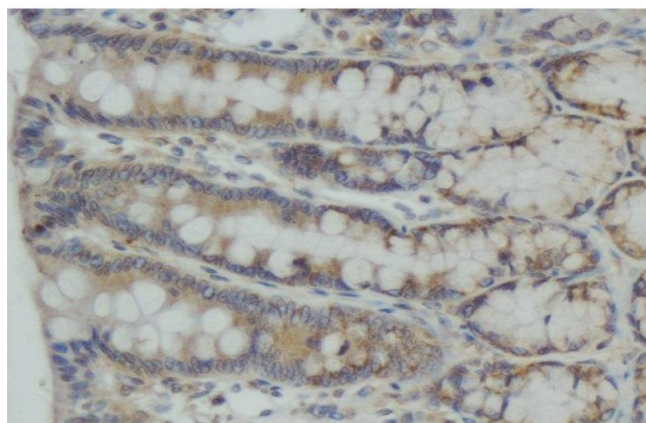
#### Western Blotting

**Image 1.** Western blot analysis of extracts from 293, using CEP55 Antibody. Lane 1 was treated with the antigen-specific peptide.



#### Western Blotting

**Image 2.** Western blot analysis of extracts from HUVEC cells using CEP55 antibody. The lane on the left is treated with the antigen-specific peptide.



#### Immunohistochemistry

**Image 3.** ABIN6274989 at 1/100 staining human colon carcinoma tissue sections by IHC-P. The tissue was formaldehyde fixed and a heat mediated antigen retrieval step in citrate buffer was performed. The tissue was then blocked and incubated with the antibody for 1.5 hours at 22°C. An HRP conjugated goat anti-rabbit antibody was used as the secondary.