

Datasheet for ABIN6257099  
**anti-CCT5 antibody (Internal Region)**[Go to Product page](#)

## 2 Images

## Overview

|                      |  |
|----------------------|--|
| Quantity:            | 100 µL   |
| Target:              | CCT5   |
| Binding Specificity: | Internal Region  |
| Reactivity:          | Human, Mouse, Rat  |
| Host:                | Rabbit   |
| Clonality:           | Polyclonal   |
| Conjugate:           | This CCT5 antibody is un-conjugated  |
| Application:         | Western Blotting (WB), ELISA, Immunofluorescence (IF), Immunocytochemistry (ICC) |

## Product Details

|                       |   |
|-----------------------|---|
| Immunogen:            | A synthesized peptide derived from human CCT5, corresponding to a region within the internal amino acids.                 |
| Isotype:              | IgG   |
| Specificity:          | CCT5 Antibody detects endogenous levels of total CCT5.  |
| Predicted Reactivity: | Pig,Zebrafish,Bovine,Horse,Sheep,Rabbit,Dog,Chicken,Xenopus   |
| Purification:         | The antiserum was purified by peptide affinity chromatography using SulfoLink™ Coupling Resin (Thermo Fisher Scientific). |

## Target Details

|         |      |
|---------|------|
| Target: | CCT5 |
|---------|------|

## Target Details

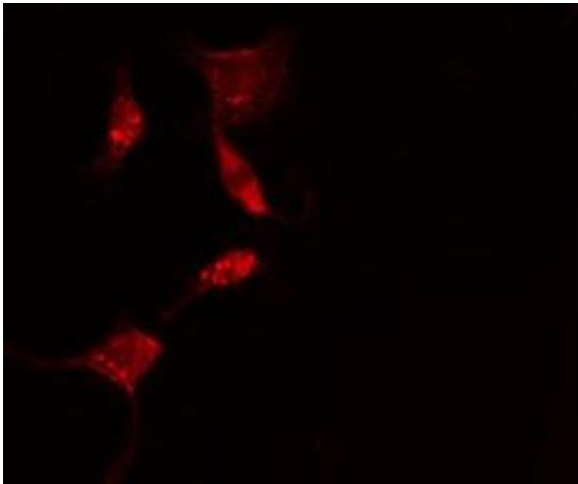
|                   |  |
|-------------------|--|
| Alternative Name: | CCT5 ( <a href="#">CCT5 Products</a> )   |
| Background:       | <p>Description: Molecular chaperone, assists the folding of proteins upon ATP hydrolysis. As part of the BBS/CCT complex may play a role in the assembly of BBSome, a complex involved in ciliogenesis regulating transports vesicles to the cilia. Known to play a role, in vitro, in the folding of actin and tubulin.</p> <p>Gene: CCT5</p> |
| Molecular Weight: | 67 kDa   |
| Gene ID:          | 22948  |
| UniProt:          | <a href="#">P48643</a>   |

## Application Details

|                    |   |
|--------------------|---|
| Application Notes: | WB 1:500-1:1000, IF/ICC 1:100-1:500, ELISA(peptide) 1:20000-1:40000 |
| Restrictions:      | For Research Use only   |

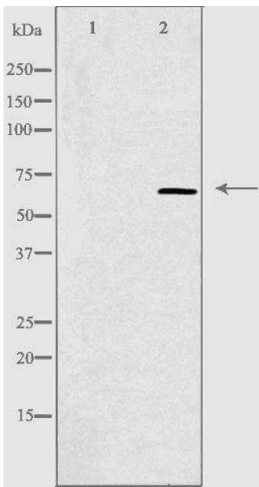
## Handling

|                    |  |
|--------------------|--|
| Format:            | Liquid   |
| Concentration:     | 1 mg/mL  |
| Buffer:            | Rabbit IgG in phosphate buffered saline , pH 7.4, 150 mM NaCl, 0.02 % sodium azide and 50 % glycerol.                  |
| Preservative:      | Sodium azide   |
| Precaution of Use: | This product contains Sodium azide: a POISONOUS AND HAZARDOUS SUBSTANCE which should be handled by trained staff only. |
| Storage:           | -20 °C   |
| Storage Comment:   | Store at -20 °C. Stable for 12 months from date of receipt.  |
| Expiry Date:       | 12 months  |



**Immunofluorescence (fixed cells)**

**Image 1.** ABIN6275623 staining HepG2 cells by IF/ICC. The sample were fixed with PFA and permeabilized in 0.1% Triton X-100,then blocked in 10% serum for 45 minutes at 25°C. The primary antibody was diluted at 1/200 and incubated with the sample for 1 hour at 37°C. An Alexa Fluor 594 conjugated goat anti-rabbit IgG (H+L) antibody(Cat.# S0006), diluted at 1/600, was used as secondary antibody



**Western Blotting**

**Image 2.** Western blot analysis of extracts from HepG2 cells, using CCT5 antibody.The lane on the left is treated with the antigen-specific peptide.