



[Go to Product page](#)

Datasheet for ABIN6257101

anti-CLCNKA antibody (C-Term)

2 Images

Overview

Quantity:	100 µL
Target:	CLCNKA
Binding Specificity:	C-Term
Reactivity:	Human
Host:	Rabbit
Clonality:	Polyclonal
Conjugate:	This CLCNKA antibody is un-conjugated
Application:	Western Blotting (WB), ELISA, Immunocytochemistry (ICC), Immunofluorescence (IF)

Product Details

Immunogen:	A synthesized peptide derived from human CLCNKA, corresponding to a region within C-terminal amino acids.
Isotype:	IgG
Specificity:	CLCNKA Antibody detects endogenous levels of total CLCNKA.
Predicted Reactivity:	Pig,Bovine,Dog
Purification:	The antiserum was purified by peptide affinity chromatography using SulfoLink™ Coupling Resin (Thermo Fisher Scientific).

Target Details

Target:	CLCNKA
---------	--------

Target Details

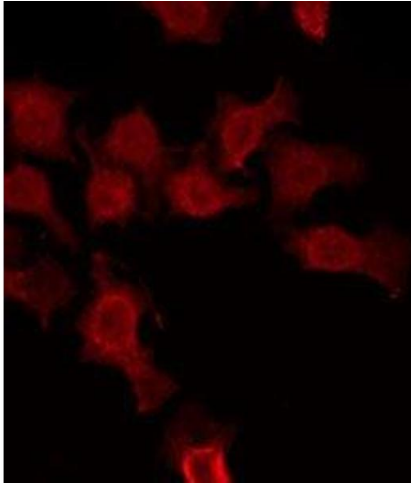
Alternative Name:	CLCNKA (CLCNKA Products)
Background:	Description: Voltage-gated chloride channel. Chloride channels have several functions including the regulation of cell volume, membrane potential stabilization, signal transduction and transepithelial transport. May be important in urinary concentrating mechanisms. Gene: CLCNKA
Molecular Weight:	75 kDa
Gene ID:	1187
UniProt:	P51800
Pathways:	Response to Water Deprivation

Application Details

Application Notes:	WB 1:500-1:1000, IF/ICC 1:100-1:500, ELISA(peptide) 1:20000-1:40000
Restrictions:	For Research Use only

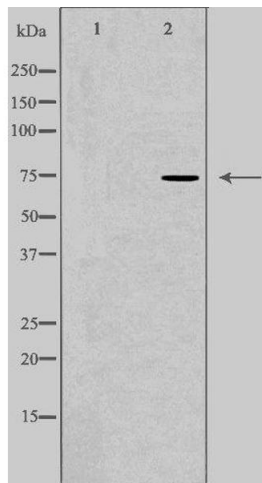
Handling

Format:	Liquid
Concentration:	1 mg/mL
Buffer:	Rabbit IgG in phosphate buffered saline , pH 7.4, 150 mM NaCl, 0.02 % sodium azide and 50 % glycerol.
Preservative:	Sodium azide
Precaution of Use:	This product contains Sodium azide: a POISONOUS AND HAZARDOUS SUBSTANCE which should be handled by trained staff only.
Storage:	-20 °C
Storage Comment:	Store at -20 °C. Stable for 12 months from date of receipt.
Expiry Date:	12 months



Immunofluorescence (fixed cells)

Image 1. ABIN6275004 staining HuvEc by IF/ICC. The sample were fixed with PFA and permeabilized in 0.1% Triton X-100, then blocked in 10% serum for 45 minutes at 25°C. The primary antibody was diluted at 1/200 and incubated with the sample for 1 hour at 37°C. An Alexa Fluor 594 conjugated goat anti-rabbit IgG (H+L) Ab, diluted at 1/600, was used as the secondary antibody



Western Blotting

Image 2. Western blot analysis of extracts from HuvEc cells, using CLCNKA antibody. The lane on the left is treated with the antigen-specific peptide.