



[Go to Product page](#)

Datasheet for ABIN6257110

## anti-COL6A2 antibody (Internal Region)

### 4 Images

#### Overview

Quantity:	100 µL
Target:	COL6A2
Binding Specificity:	Internal Region
Reactivity:	Human, Rat
Host:	Rabbit
Clonality:	Polyclonal
Conjugate:	This COL6A2 antibody is un-conjugated
Application:	Western Blotting (WB), ELISA, Immunohistochemistry (IHC), Immunofluorescence (IF), Immunocytochemistry (ICC)

#### Product Details

Immunogen:	A synthesized peptide derived from human Collagen VI alpha 2, corresponding to a region within the internal amino acids.
Isotype:	IgG
Specificity:	Collagen VI alpha 2 Antibody detects endogenous levels of total Collagen VI alpha 2.
Predicted Reactivity:	Pig,Bovine,Horse,Sheep,Rabbit,Dog
Purification:	The antiserum was purified by peptide affinity chromatography using SulfoLink™ Coupling Resin (Thermo Fisher Scientific).

#### Target Details

Target:	COL6A2
---------	--------

## Target Details

---

Alternative Name:	COL6A2 ( <a href="#">COL6A2 Products</a> )
Background:	Description: Collagen VI acts as a cell-binding protein. Gene: COL6A2
Molecular Weight:	109 kDa
Gene ID:	1292
UniProt:	<a href="#">P12110</a>

## Application Details

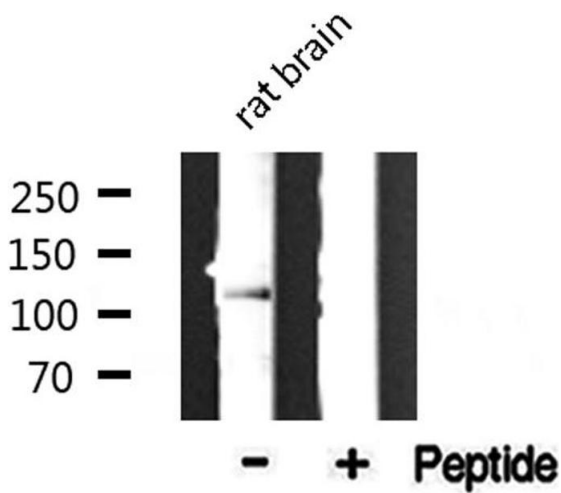
---

Application Notes:	WB 1:500-1:1000, IHC: 1:50-1:200, IF/ICC 1:100-1:500, ELISA(peptide) 1:20000-1:40000
Restrictions:	For Research Use only

## Handling

---

Format:	Liquid
Concentration:	1 mg/mL
Buffer:	Rabbit IgG in phosphate buffered saline , pH 7.4, 150 mM NaCl, 0.02 % sodium azide and 50 % glycerol.
Preservative:	Sodium azide
Precaution of Use:	This product contains Sodium azide: a POISONOUS AND HAZARDOUS SUBSTANCE which should be handled by trained staff only.
Storage:	-20 °C
Storage Comment:	Store at -20 °C. Stable for 12 months from date of receipt.
Expiry Date:	12 months



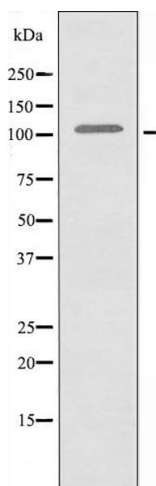
### Western Blotting

**Image 1.** Western blot analysis of extracts from rat brain, using Collagen VI  $\alpha 2$  antibody.



### Immunofluorescence (fixed cells)

**Image 2.** ABIN6274624 staining HeLa cells by IF/ICC. The sample were fixed with PFA and permeabilized in 0.1% Triton X-100, then blocked in 10% serum for 45 minutes at 25°C. The primary antibody was diluted at 1/200 and incubated with the sample for 1 hour at 37°C. An Alexa Fluor 594 conjugated goat anti-rabbit IgG (H+L) antibody (Cat.# S0006), diluted at 1/600, was used as secondary antibody.



### Western Blotting

**Image 3.** Western blot analysis of extracts from K562 cells using Collagen VI  $\alpha 2$  antibody.

Please check the [product details page](#) for more images. Overall 4 images are available for ABIN6257110.