

Datasheet for ABIN6257123

anti-Cyclin Y antibody (Internal Region)[Go to Product page](#)**1** Image

Overview

Quantity:	100 µL
Target:	Cyclin Y (CCNY)
Binding Specificity:	Internal Region
Reactivity:	Human, Mouse
Host:	Rabbit
Clonality:	Polyclonal
Conjugate:	This Cyclin Y antibody is un-conjugated
Application:	Western Blotting (WB), ELISA, Immunofluorescence (IF), Immunocytochemistry (ICC)

Product Details

Immunogen:	A synthesized peptide derived from human CCNY, corresponding to a region within the internal amino acids.
Isotype:	IgG
Specificity:	CCNY Antibody detects endogenous levels of total CCNY.
Predicted Reactivity:	Pig,Zebrafish,Bovine,Horse,Sheep,Rabbit,Dog,Chicken
Purification:	The antiserum was purified by peptide affinity chromatography using SulfoLink™ Coupling Resin (Thermo Fisher Scientific).

Target Details

Target:	Cyclin Y (CCNY)
---------	-----------------

Target Details

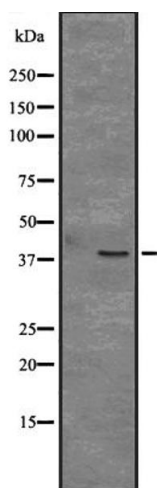
Alternative Name:	CCNY (CCNY Products)
Background:	<p>Description: Positive regulatory subunit of the cyclin-dependent kinases CDK14/PFTK1 and CDK16. Acts as a cell-cycle regulator of Wnt signaling pathway during G2/M phase by recruiting CDK14/PFTK1 to the plasma membrane and promoting phosphorylation of LRP6, leading to the activation of the Wnt signaling pathway. Recruits CDK16 to the plasma membrane. Isoform 3 might play a role in the activation of MYC-mediated transcription.</p> <p>Gene: CCNY</p>
Molecular Weight:	39 kDa
Gene ID:	219771
UniProt:	Q8ND76

Application Details

Application Notes:	WB 1:500-1:2000, IF/ICC 1:100-1:500, ELISA(peptide) 1:20000-1:40000
Restrictions:	For Research Use only

Handling

Format:	Liquid
Concentration:	1 mg/mL
Buffer:	Rabbit IgG in phosphate buffered saline, pH 7.4, 150 mM NaCl, 0.02 % sodium azide and 50 % glycerol.
Preservative:	Sodium azide
Precaution of Use:	This product contains Sodium azide: a POISONOUS AND HAZARDOUS SUBSTANCE which should be handled by trained staff only.
Storage:	-20 °C
Expiry Date:	12 months



Western Blotting

Image 1. Western blot analysis of CCNY expression in Mouse bladder tissue lysate „The lane on the left is treated with the antigen-specific peptide.