



[Go to Product page](#)

Datasheet for ABIN6257134

## anti-ERCC5 antibody (N-Term)

### 2 Images

#### Overview

Quantity:	100 µL
Target:	ERCC5
Binding Specificity:	N-Term
Reactivity:	Human
Host:	Rabbit
Clonality:	Polyclonal
Conjugate:	This ERCC5 antibody is un-conjugated
Application:	Western Blotting (WB), ELISA, Immunofluorescence (IF), Immunocytochemistry (ICC)

#### Product Details

Immunogen:	A synthesized peptide derived from human ERCC5, corresponding to a region within N-terminal amino acids.
Isotype:	IgG
Specificity:	ERCC5 Antibody detects endogenous levels of total ERCC5.
Predicted Reactivity:	Bovine,Dog
Purification:	The antiserum was purified by peptide affinity chromatography using SulfoLink™ Coupling Resin (Thermo Fisher Scientific).

#### Target Details

Target:	ERCC5
---------	-------

## Target Details

---

Alternative Name:	ERCC5 ( <a href="#">ERCC5 Products</a> )
Background:	<p>Description: Single-stranded structure-specific DNA endonuclease involved in DNA excision repair. Makes the 3'incision in DNA nucleotide excision repair (NER). Acts as a cofactor for a DNA glycosylase that removes oxidized pyrimidines from DNA. May also be involved in transcription-coupled repair of this kind of damage, in transcription by RNA polymerase II, and perhaps in other processes too.</p> <p>Gene: ERCC5</p>
Molecular Weight:	130 kDa
Gene ID:	2073
UniProt:	<a href="#">P28715</a>
Pathways:	<a href="#">DNA Damage Repair</a>

## Application Details

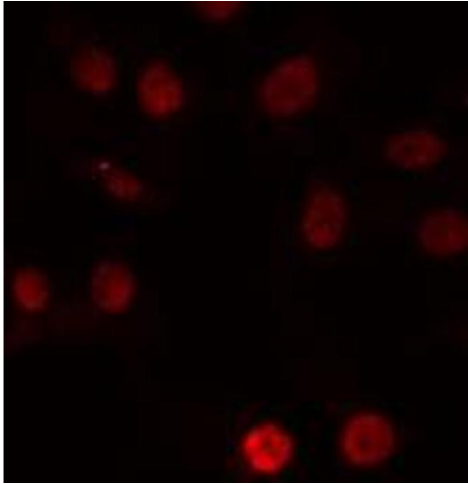
---

Application Notes:	WB 1:500-1:1000, IF/ICC 1:100-1:500, ELISA(peptide) 1:20000-1:40000
Restrictions:	For Research Use only

## Handling

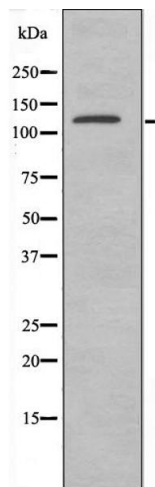
---

Format:	Liquid
Concentration:	1 mg/mL
Buffer:	Rabbit IgG in phosphate buffered saline , pH 7.4, 150 mM NaCl, 0.02 % sodium azide and 50 % glycerol.
Preservative:	Sodium azide
Precaution of Use:	This product contains Sodium azide: a POISONOUS AND HAZARDOUS SUBSTANCE which should be handled by trained staff only.
Storage:	-20 °C
Storage Comment:	Store at -20 °C. Stable for 12 months from date of receipt.
Expiry Date:	12 months



### Immunofluorescence (fixed cells)

**Image 1.** ABIN6274222 staining HeLa cells by IF/ICC. The sample were fixed with PFA and permeabilized in 0.1% Triton X-100, then blocked in 10% serum for 45 minutes at 25°C. The primary antibody was diluted at 1/200 and incubated with the sample for 1 hour at 37°C. An Alexa Fluor 594 conjugated goat anti-rabbit IgG (H+L) antibody (Cat.# S0006), diluted at 1/600, was used as secondary antibody.



### Western Blotting

**Image 2.** Western blot analysis of extracts from K562 cells, using ERCC5 antibody.