

Datasheet for ABIN6257201

anti-G Protein-Coupled Receptor 1 antibody (C-Term)**2** Images[Go to Product page](#)

Overview

Quantity:	100 µL
Target:	G Protein-Coupled Receptor 1 (GPR1)
Binding Specificity:	C-Term
Reactivity:	Human
Host:	Rabbit
Clonality:	Polyclonal
Conjugate:	This G Protein-Coupled Receptor 1 antibody is un-conjugated
Application:	ELISA, Immunohistochemistry (IHC), Western Blotting (WB)

Product Details

Immunogen:	A synthesized peptide derived from human GPR1, corresponding to a region within C-terminal amino acids.
Isotype:	IgG
Specificity:	GPR1 Antibody detects endogenous levels of total GPR1.
Predicted Reactivity:	Pig,Bovine,Horse,Sheep,Dog,Chicken
Purification:	The antiserum was purified by peptide affinity chromatography using SulfoLink™ Coupling Resin (Thermo Fisher Scientific).

Target Details

Target:	G Protein-Coupled Receptor 1 (GPR1)
---------	-------------------------------------

Target Details

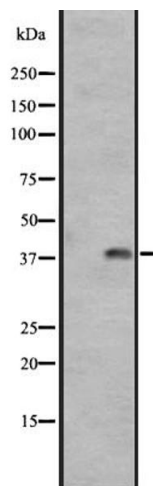
Alternative Name:	GPR1 (GPR1 Products)
Background:	Description: Receptor for the inflammation-associated leukocyte chemoattractant chemerin/RARRES2 suggesting a role for this receptor in the regulation of inflammation. Can act as a coreceptor for HIV-1. Gene: GPR1
Molecular Weight:	38 kDa,
Gene ID:	2825
UniProt:	P46091
Pathways:	Steroid Hormone Mediated Signaling Pathway , Regulation of Carbohydrate Metabolic Process

Application Details

Application Notes:	WB 1:500-1:2000, IHC 1:50-1:200, ELISA(peptide) 1:20000-1:40000
Restrictions:	For Research Use only

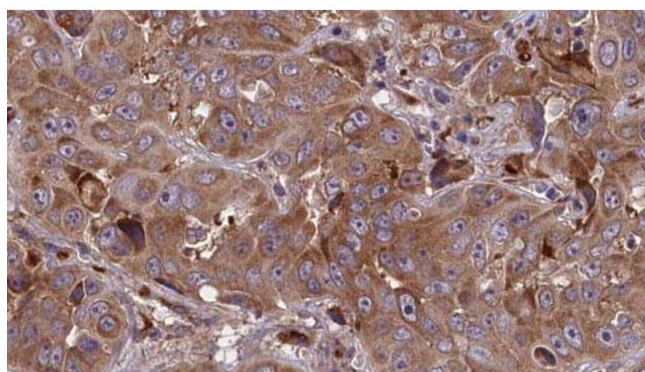
Handling

Format:	Liquid
Concentration:	1 mg/mL
Buffer:	Rabbit IgG in phosphate buffered saline, pH 7.4, 150 mM NaCl, 0.02 % sodium azide and 50 % glycerol.
Preservative:	Sodium azide
Precaution of Use:	This product contains Sodium azide: a POISONOUS AND HAZARDOUS SUBSTANCE which should be handled by trained staff only.
Storage:	-20 °C
Expiry Date:	12 months



Western Blotting

Image 1. Western blot analysis of GPR1 expression in A431 whole cell lysate. The lane on the left is treated with the antigen-specific peptide.



Immunohistochemistry

Image 2. ABIN6273850 at 1/100 staining Human liver cancer tissue by IHC-P. The sample was formaldehyde fixed and a heat mediated antigen retrieval step in citrate buffer was performed. The sample was then blocked and incubated with the antibody for 1.5 hours at 22°C. An HRP conjugated goat anti-rabbit antibody was used as the secondary.