

Datasheet for ABIN6257203

**anti-G Protein-Coupled Receptor 110 antibody (C-Term)****3** Images[Go to Product page](#)

## Overview

Quantity:	100 µL
Target:	G Protein-Coupled Receptor 110 (GPR110)
Binding Specificity:	C-Term
Reactivity:	Human, Mouse
Host:	Rabbit
Clonality:	Polyclonal
Conjugate:	This G Protein-Coupled Receptor 110 antibody is un-conjugated
Application:	Western Blotting (WB), ELISA, Immunofluorescence (IF), Immunohistochemistry (IHC), Immunocytochemistry (ICC)

## Product Details

Immunogen:	A synthesized peptide derived from human GPR110, corresponding to a region within C-terminal amino acids.
Isotype:	IgG
Specificity:	GPR110 Antibody detects endogenous levels of total GPR110.
Predicted Reactivity:	Rabbit
Purification:	The antiserum was purified by peptide affinity chromatography using SulfoLink™ Coupling Resin (Thermo Fisher Scientific).

## Target Details

Target:	G Protein-Coupled Receptor 110 (GPR110)
---------	---

## Target Details

Alternative Name:	ADGRF1 ( <a href="#">GPR110 Products</a> )
-------------------	--

Background:	Description: Orphan receptor. Gene: ADGRF1
-------------	---

Molecular Weight:	101 kDa,
-------------------	----------

Gene ID:	266977
----------	--------

UniProt:	<a href="#">Q5T601</a>
----------	------------------------

## Application Details

Application Notes:	WB 1:500-1:2000, IHC 1:50-1:200, IF/ICC 1:100-1:500, ELISA(peptide) 1:20000-1:40000
--------------------	---

Restrictions:	For Research Use only
---------------	-----------------------

## Handling

Format:	Liquid
---------	--------

Concentration:	1 mg/mL
----------------	---------

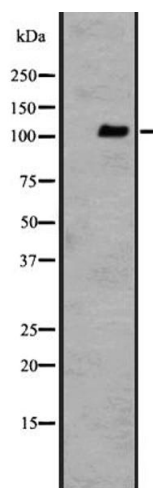
Buffer:	Rabbit IgG in phosphate buffered saline, pH 7.4, 150 mM NaCl, 0.02 % sodium azide and 50 % glycerol.
---------	--

Preservative:	Sodium azide
---------------	--------------

Precaution of Use:	This product contains Sodium azide: a POISONOUS AND HAZARDOUS SUBSTANCE which should be handled by trained staff only.
--------------------	--

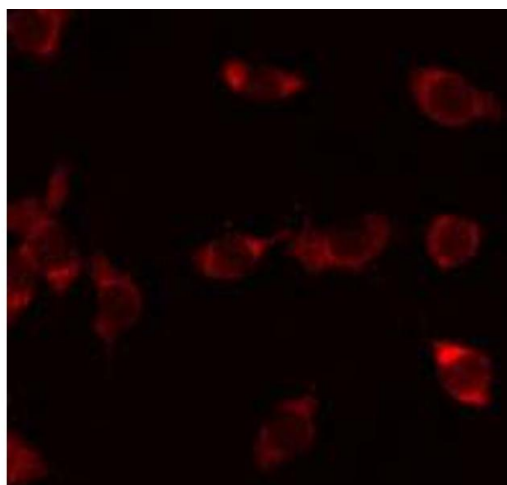
Storage:	-20 °C
----------	--------

Expiry Date:	12 months
--------------	-----------



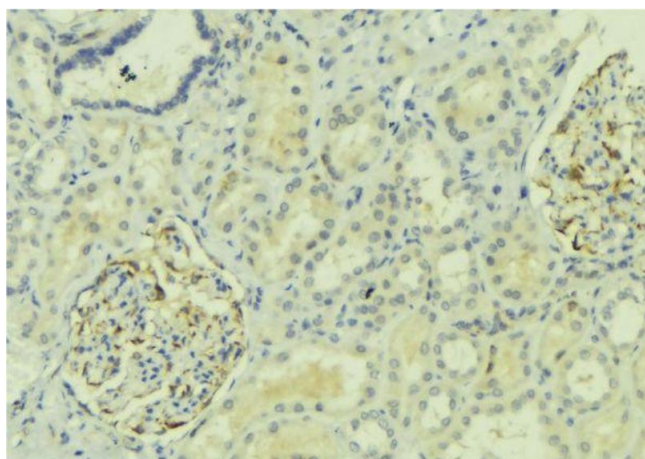
### Western Blotting

**Image 1.** Western blot analysis of GPR110 expression in Jurkat cell lysate. The lane on the left is treated with the antigen-specific peptide.



### Immunofluorescence (fixed cells)

**Image 2.** ABIN6273926 staining Hela by IF/ICC. The sample were fixed with PFA and permeabilized in 0.1% Triton X-100, then blocked in 10% serum for 45 minutes at 25°C. The primary antibody was diluted at 1/200 and incubated with the sample for 1 hour at 37°C. An Alexa Fluor 594 conjugated goat anti-rabbit IgG (H+L) Ab, diluted at 1/600, was used as the secondary antibody.



### Immunohistochemistry

**Image 3.** ABIN6273926 at 1/100 staining Mouse kidney tissue by IHC-P. The sample was formaldehyde fixed and a heat mediated antigen retrieval step in citrate buffer was performed. The sample was then blocked and incubated with the antibody for 1.5 hours at 22°C. An HRP conjugated goat anti-rabbit antibody was used as the secondary.