

Datasheet for ABIN6257210

**anti-G Protein-Coupled Receptor 128 antibody (N-Term)**[Go to Product page](#)**2** Images

## Overview

Quantity:	100 µL
Target:	G Protein-Coupled Receptor 128 (GPR128)
Binding Specificity:	N-Term
Reactivity:	Human
Host:	Rabbit
Clonality:	Polyclonal
Conjugate:	This G Protein-Coupled Receptor 128 antibody is un-conjugated
Application:	Western Blotting (WB), ELISA, Immunocytochemistry (ICC), Immunofluorescence (IF), Immunohistochemistry (IHC)

## Product Details

Immunogen:	A synthesized peptide derived from human GPR128, corresponding to a region within N-terminal amino acids.
Isotype:	IgG
Specificity:	GPR128 Antibody detects endogenous levels of total GPR128.
Predicted Reactivity:	Pig,Horse,Rabbit
Purification:	The antiserum was purified by peptide affinity chromatography using SulfoLink™ Coupling Resin (Thermo Fisher Scientific).

## Target Details

Target:	G Protein-Coupled Receptor 128 (GPR128)
---------	---

## Target Details

Alternative Name: ADGRG7 ([GPR128 Products](#))

Background: Description: Orphan receptor.  
Gene: ADGRG7

Molecular Weight: 89 kDa

Gene ID: 84873

UniProt: [Q96K78](#)

## Application Details

Application Notes: WB 1:500-1:2000, IHC 1:50-1:200, IF/ICC 1:100-1:500, ELISA(peptide) 1:20000-1:40000

Restrictions: For Research Use only

## Handling

Format: Liquid

Concentration: 1 mg/mL

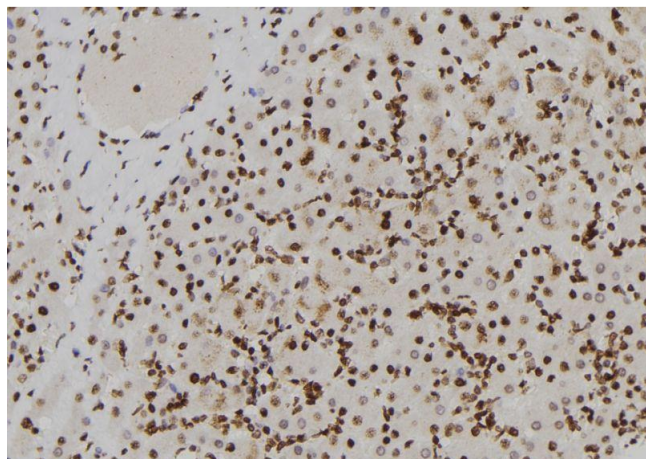
Buffer: Rabbit IgG in phosphate buffered saline, pH 7.4, 150 mM NaCl, 0.02 % sodium azide and 50 % glycerol.

Preservative: Sodium azide

Precaution of Use: This product contains Sodium azide: a POISONOUS AND HAZARDOUS SUBSTANCE which should be handled by trained staff only.

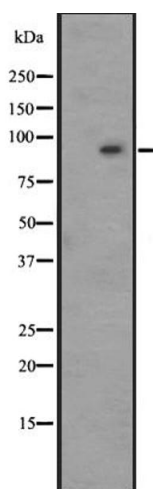
Storage: -20 °C

Expiry Date: 12 months



### Immunohistochemistry

**Image 1.** ABIN6273852 at 1/100 staining Human liver tissue by IHC-P. The sample was formaldehyde fixed and a heat mediated antigen retrieval step in citrate buffer was performed. The sample was then blocked and incubated with the antibody for 1.5 hours at 22°C. An HRP conjugated goat anti-rabbit antibody was used as the secondary.



### Western Blotting

**Image 2.** Western blot analysis of GPR128 expression in HepG2 whole cell lysate „The lane on the left is treated with the antigen-specific peptide.