

Datasheet for ABIN6257211

anti-G Protein-Coupled Receptor 133 antibody (Internal Region)[Go to Product page](#)**2** Images

Overview

Quantity:	100 µL
Target:	G Protein-Coupled Receptor 133 (GPR133)
Binding Specificity:	Internal Region
Reactivity:	Human
Host:	Rabbit
Clonality:	Polyclonal
Conjugate:	This G Protein-Coupled Receptor 133 antibody is un-conjugated
Application:	Western Blotting (WB), ELISA, Immunohistochemistry (IHC)

Product Details

Immunogen:	A synthesized peptide derived from human GPR133, corresponding to a region within the internal amino acids.
Isotype:	IgG
Specificity:	GPR133 Antibody detects endogenous levels of total GPR133.
Purification:	The antiserum was purified by peptide affinity chromatography using SulfoLink™ Coupling Resin (Thermo Fisher Scientific).

Target Details

Target:	G Protein-Coupled Receptor 133 (GPR133)
Alternative Name:	ADGRD1 (GPR133 Products)

Target Details

Background:	Description: Orphan receptor. Signals via G(s)-alpha family of G-proteins (PubMed:22025619, PubMed:22575658). Has protumorigenic function especially in glioblastoma (PubMed:27775701). Gene: ADGRD1
-------------	---

Molecular Weight:	97 for isoform 1 , for isoform 2, 61 kDa
-------------------	--

Gene ID:	283383
----------	--------

UniProt:	Q6QNK2
----------	------------------------

Application Details

Application Notes:	WB 1:500-1:2000, IHC 1:50-1:200, ELISA(peptide) 1:20000-1:40000
--------------------	---

Restrictions:	For Research Use only
---------------	-----------------------

Handling

Format:	Liquid
---------	--------

Concentration:	1 mg/mL
----------------	---------

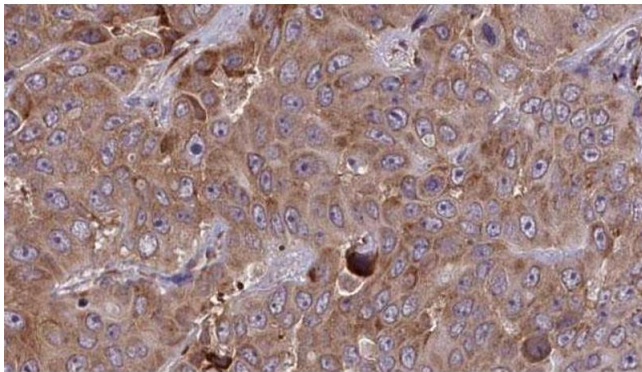
Buffer:	Rabbit IgG in phosphate buffered saline, pH 7.4, 150 mM NaCl, 0.02 % sodium azide and 50 % glycerol.
---------	--

Preservative:	Sodium azide
---------------	--------------

Precaution of Use:	This product contains Sodium azide: a POISONOUS AND HAZARDOUS SUBSTANCE which should be handled by trained staff only.
--------------------	--

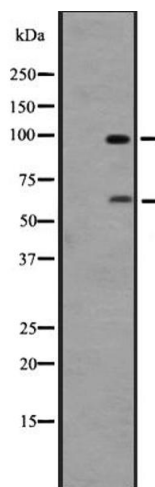
Storage:	-20 °C
----------	--------

Expiry Date:	12 months
--------------	-----------



Immunohistochemistry

Image 1. ABIN6273853 at 1/100 staining Human liver cancer tissue by IHC-P. The sample was formaldehyde fixed and a heat mediated antigen retrieval step in citrate buffer was performed. The sample was then blocked and incubated with the antibody for 1.5 hours at 22°C. An HRP conjugated goat anti-rabbit antibody was used as the secondary.



Western Blotting

Image 2. Western blot analysis of GPR133 expression in 293 cell line lysates „The lane on the left is treated with the antigen-specific peptide.