

Datasheet for ABIN6257212

anti-G Protein-Coupled Receptor 133 antibody**2** Images[Go to Product page](#)

Overview

Quantity:	100 µL
Target:	G Protein-Coupled Receptor 133 (GPR133)
Reactivity:	Human, Mouse
Host:	Rabbit
Clonality:	Polyclonal
Conjugate:	This G Protein-Coupled Receptor 133 antibody is un-conjugated
Application:	Western Blotting (WB), ELISA, Immunofluorescence (IF), Immunocytochemistry (ICC)

Product Details

Immunogen:	A synthesized peptide
Isotype:	IgG
Specificity:	GPR133 Antibody detects endogenous levels of total GPR133
Cross-Reactivity:	Human, Mouse (Murine)
Purification:	The antiserum was purified by peptide affinity chromatography using SulfoLink™ Coupling Resin (Thermo Fisher Scientific).

Target Details

Target:	G Protein-Coupled Receptor 133 (GPR133)
Alternative Name:	GPR133 (GPR133 Products)
Background:	Description: Orphan receptor. Signals via G(s)-alpha family of G-proteins (PubMed:22025619,

Target Details

PubMed:22575658). Has protumorigenic function especially in glioblastoma (PubMed:27775701).
Gene: ADGRD1

Molecular Weight: 96 kDa

Gene ID: 283383

UniProt: [Q6QNK2](#)

Application Details

Application Notes: WB 1:500~1:1000 IF/ICC 1:100-1:500

Restrictions: For Research Use only

Handling

Format: Liquid

Concentration: 1 mg/mL

Buffer: Rabbit IgG in phosphate buffered saline , pH 7.4, 150 mM NaCl, 0.02 % sodium azide and 50 % glycerol.

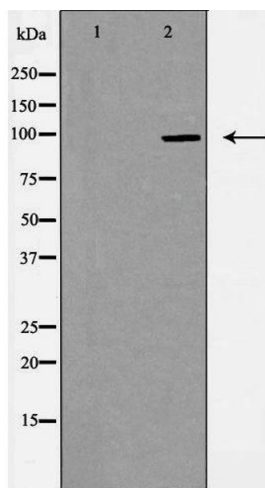
Preservative: Sodium azide

Precaution of Use: This product contains Sodium azide: a POISONOUS AND HAZARDOUS SUBSTANCE which should be handled by trained staff only.

Storage: -20 °C

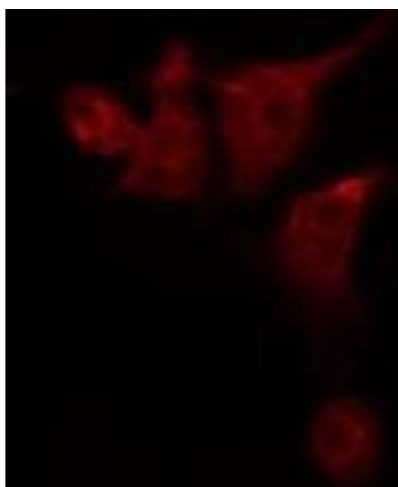
Storage Comment: Store at -20 °C.Stable for 12 months from date of receipt

Expiry Date: 12 months



Western Blotting

Image 1. Western blot analysis of extracts from COS-7 cells, using GPR133 antibody. The lane on the left is treated with the antigen-specific peptide.



Immunofluorescence (fixed cells)

Image 2. ABIN6276009 staining 293T by IF/ICC. The sample were fixed with PFA and permeabilized in 0.1% Triton X-100, then blocked in 10% serum for 45 minutes at 25°C. The primary antibody was diluted at 1/200 and incubated with the sample for 1 hour at 37°C. An Alexa Fluor 594 conjugated goat anti-rabbit IgG (H+L) Ab, diluted at 1/600, was used as the secondary antibody.