

Datasheet for ABIN6257219

**anti-GPR153 antibody (Internal Region)****3** Images[Go to Product page](#)

## Overview

Quantity:	100 µL
Target:	GPR153
Binding Specificity:	Internal Region
Reactivity:	Human, Mouse, Rat
Host:	Rabbit
Clonality:	Polyclonal
Conjugate:	This GPR153 antibody is un-conjugated
Application:	Western Blotting (WB), ELISA, Immunofluorescence (IF), Immunohistochemistry (IHC), Immunocytochemistry (ICC)

## Product Details

Immunogen:	A synthesized peptide derived from human GPR153, corresponding to a region within the internal amino acids.
Isotype:	IgG
Specificity:	GPR153 Antibody detects endogenous levels of total GPR153.
Predicted Reactivity:	Pig,Zebrafish,Bovine,Horse,Sheep,Dog,Chicken,Xenopus
Purification:	The antiserum was purified by peptide affinity chromatography using SulfoLink™ Coupling Resin (Thermo Fisher Scientific).

## Target Details

Target:	GPR153
---------	--------

## Target Details

Alternative Name: GPR153 ([GPR153 Products](#))

Background: Description: Orphan receptor.  
Gene: GPR153

Molecular Weight: 65 kDa

Gene ID: 387509

UniProt: [Q6NV75](#)

## Application Details

Application Notes: WB 1:500-1:1000, IF/ICC 1:100-1:500, IHC 1:50-1:200, ELISA(peptide) 1:20000-1:40000

Restrictions: For Research Use only

## Handling

Format: Liquid

Concentration: 1 mg/mL

Buffer: Rabbit IgG in phosphate buffered saline , pH 7.4, 150 mM NaCl, 0.02 % sodium azide and 50 % glycerol.

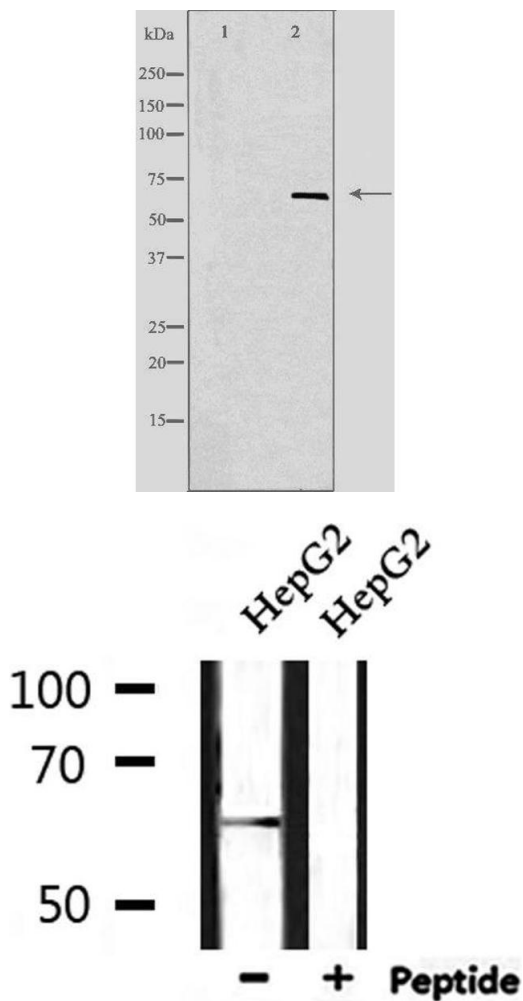
Preservative: Sodium azide

Precaution of Use: This product contains Sodium azide: a POISONOUS AND HAZARDOUS SUBSTANCE which should be handled by trained staff only.

Storage: -20 °C

Storage Comment: Store at -20 °C. Stable for 12 months from date of receipt.

Expiry Date: 12 months



#### Western Blotting

**Image 1.** Western blot analysis of extracts from K562 cells, using GPR153 antibody. The lane on the left is treated with the antigen-specific peptide.

#### Western Blotting

**Image 2.** Western blot analysis of extracts from HepG2, using GPR153 Antibody.

#### Immunofluorescence (fixed cells)

**Image 3.** ABIN6276016 staining Hela by IF/ICC. The sample were fixed with PFA and permeabilized in 0.1% Triton X-100, then blocked in 10% serum for 45 minutes at 25°C. The primary antibody was diluted at 1/200 and incubated with the sample for 1 hour at 37°C. An Alexa Fluor 594 conjugated goat anti-rabbit IgG (H+L) Ab, diluted at 1/600, was used as the secondary antibody