

Datasheet for ABIN6257225 anti-GPR18 antibody (Internal Region)

[Go to Product page](#)

1 Image

Overview

Quantity:	100 µL
Target:	GPR18
Binding Specificity:	Internal Region
Reactivity:	Human, Mouse
Host:	Rabbit
Clonality:	Polyclonal
Conjugate:	This GPR18 antibody is un-conjugated
Application:	Western Blotting (WB), ELISA, Immunofluorescence (IF), Immunocytochemistry (ICC)

Product Details

Immunogen:	A synthesized peptide derived from human GPR18, corresponding to a region within the internal amino acids.
Isotype:	IgG
Specificity:	GPR18 Antibody detects endogenous levels of total GPR18.
Predicted Reactivity:	Horse,Rabbit,Dog
Purification:	The antiserum was purified by peptide affinity chromatography using SulfoLink™ Coupling Resin (Thermo Fisher Scientific).

Target Details

Target:	GPR18
---------	-------

Target Details

Alternative Name:	GPR18 (GPR18 Products)
Background:	<p>Description: Receptor for endocannabinoid N-arachidonyl glycine (NAGly) (PubMed:16844083, PubMed:24762058, PubMed:27572937). However, conflicting results about the role of NAGly as an agonist are reported (PubMed:27018161). Can also be activated by plant-derived and synthetic cannabinoid agonists (PubMed:24762058). The activity of this receptor is mediated by G proteins which inhibit adenylyl cyclase (PubMed:16844083). May contribute to regulation of the immune system. Is required for normal homeostasis of CD8+ subsets of intraepithelial lymphocytes (IELs) (CD8alphaalpha and CD8alphabeta IELs)in small intestine by supporting preferential migration of CD8alphaalpha T-cells to intraepithelial compartment over lamina propria compartment, and by mediating their reconstitution into small intestine after bone marrow transplant (By similarity). Plays a role in hypotensive responses, mediating reduction in intraocular and blood pressure (By similarity). Mediates NAGly-induced process of reorganization of actin filaments and induction of acrosomal exocytosis (PubMed:27572937).</p> <p>Gene: GPR18</p>
Molecular Weight:	35 kDa
Gene ID:	2841
UniProt:	Q14330

Application Details

Application Notes:	WB 1:500-1:1000, IF/ICC 1:100-1:500, ELISA(peptide) 1:20000-1:40000
Restrictions:	For Research Use only

Handling

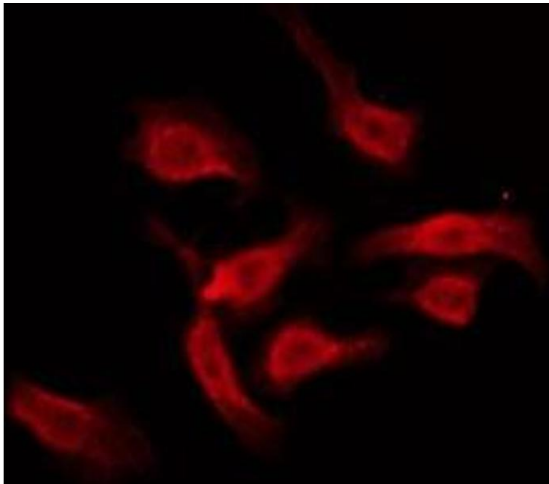
Format:	Liquid
Concentration:	1 mg/mL
Buffer:	Rabbit IgG in phosphate buffered saline , pH 7.4, 150 mM NaCl, 0.02 % sodium azide and 50 % glycerol.
Preservative:	Sodium azide
Precaution of Use:	This product contains Sodium azide: a POISONOUS AND HAZARDOUS SUBSTANCE which should be handled by trained staff only.
Storage:	-20 °C

Handling

Storage Comment: Store at -20 °C. Stable for 12 months from date of receipt.

Expiry Date: 12 months

Images



Immunofluorescence (fixed cells)

Image 1. ABIN6275966 staining HT29 by IF/ICC. The sample were fixed with PFA and permeabilized in 0.1% Triton X-100, then blocked in 10% serum for 45 minutes at 25°C. The primary antibody was diluted at 1/200 and incubated with the sample for 1 hour at 37°C. An Alexa Fluor 594 conjugated goat anti-rabbit IgG (H+L) Ab, diluted at 1/600, was used as the secondary antibody.