

Datasheet for ABIN6257231
anti-Keratin 77 antibody (Internal Region)[Go to Product page](#)

2 Images

Overview

Quantity:	100 µL
Target:	Keratin 77 (KRT77)
Binding Specificity:	Internal Region
Reactivity:	Human, Rat
Host:	Rabbit
Clonality:	Polyclonal
Conjugate:	This Keratin 77 antibody is un-conjugated
Application:	Immunohistochemistry (IHC), Western Blotting (WB), ELISA

Product Details

Immunogen:	A synthesized peptide derived from human K2C1B, corresponding to a region within the internal amino acids.
Isotype:	IgG
Specificity:	K2C1B Antibody detects endogenous levels of total K2C1B.
Predicted Reactivity:	Pig,Bovine,Horse,Sheep
Purification:	The antiserum was purified by peptide affinity chromatography using SulfoLink™ Coupling Resin (Thermo Fisher Scientific).

Target Details

Target:	Keratin 77 (KRT77)
---------	--------------------

Target Details

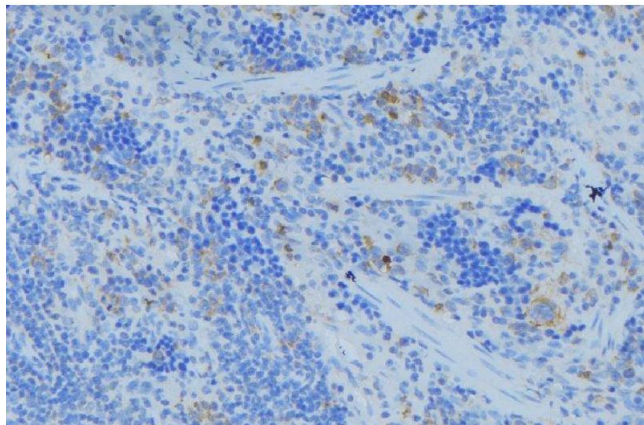
Alternative Name:	KRT77 (KRT77 Products)
Background:	Description: There are two types of cytoskeletal and microfibrillar keratin: I (acidic, 40-55 kDa) and II (neutral to basic, 56-70 kDa). Gene: KRT77
Gene ID:	374454
UniProt:	Q7Z794

Application Details

Application Notes:	WB 1:500-1:2000, IHC 1:50-1:200, ELISA(peptide) 1:20000-1:40000
Restrictions:	For Research Use only

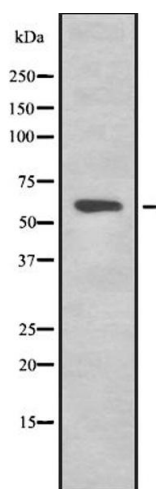
Handling

Format:	Liquid
Concentration:	1 mg/mL
Buffer:	Rabbit IgG in phosphate buffered saline, pH 7.4, 150 mM NaCl, 0.02 % sodium azide and 50 % glycerol.
Preservative:	Sodium azide
Precaution of Use:	This product contains Sodium azide: a POISONOUS AND HAZARDOUS SUBSTANCE which should be handled by trained staff only.
Storage:	-20 °C
Expiry Date:	12 months



Immunohistochemistry

Image 1. ABIN6273685 at 1/100 staining Human lymph node tissue by IHC-P. The sample was formaldehyde fixed and a heat mediated antigen retrieval step in citrate buffer was performed. The sample was then blocked and incubated with the antibody for 1.5 hours at 22°C. An HRP conjugated goat anti-rabbit antibody was used as the secondary



Western Blotting

Image 2. Western blot analysis of K2C1B expression in HEK293 cells. The lane on the left is treated with the antigen-specific peptide.