

Datasheet for ABIN6257232

**anti-SLC6A1 antibody (Internal Region)**[Go to Product page](#)**3** Images

## Overview

Quantity:	100 µL
Target:	SLC6A1 (GAT1)
Binding Specificity:	Internal Region
Reactivity:	Human, Rat, Mouse
Host:	Rabbit
Clonality:	Polyclonal
Conjugate:	This SLC6A1 antibody is un-conjugated
Application:	Western Blotting (WB), ELISA, Immunofluorescence (IF), Immunocytochemistry (ICC)

## Product Details

Immunogen:	A synthesized peptide derived from human SLC6A1, corresponding to a region within the internal amino acids.
Isotype:	IgG
Specificity:	SLC6A1 Antibody detects endogenous levels of total SLC6A1.
Predicted Reactivity:	Pig,Bovine,Horse,Sheep,Dog
Purification:	The antiserum was purified by peptide affinity chromatography using SulfoLink™ Coupling Resin (Thermo Fisher Scientific).

## Target Details

Target:	SLC6A1 (GAT1)
---------	---------------

## Target Details

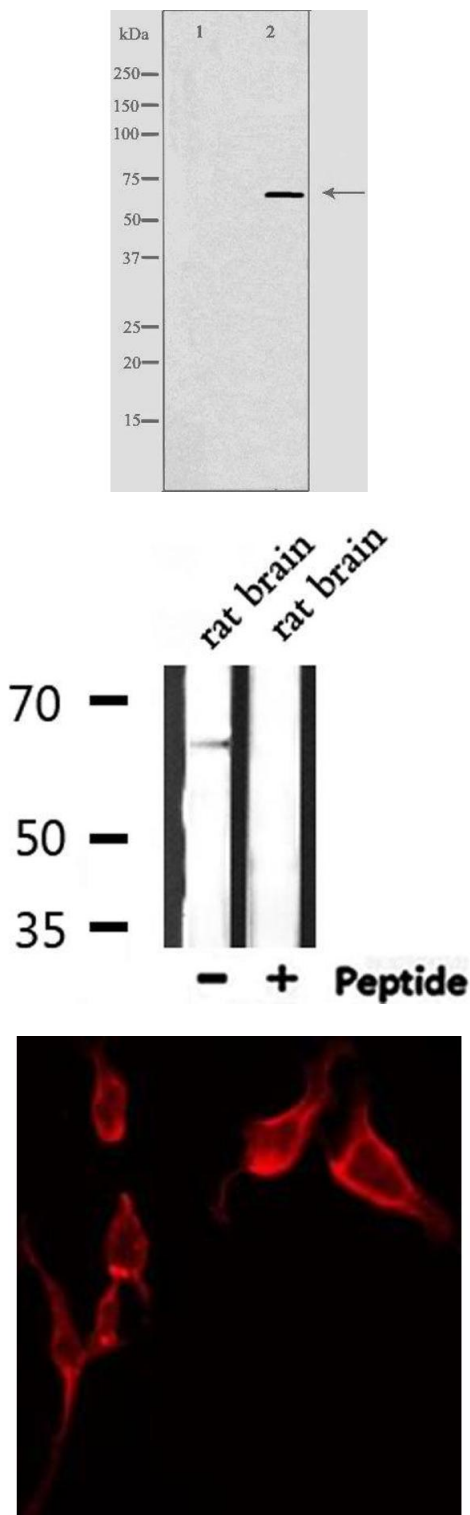
Alternative Name:	SLC6A1 ( <a href="#">GAT1 Products</a> )
Background:	Description: Terminates the action of GABA by its high affinity sodium-dependent reuptake into presynaptic terminals. Gene: SLC6A1
Molecular Weight:	67 kDa
Gene ID:	6529
UniProt:	<a href="#">P30531</a>

## Application Details

Application Notes:	WB 1:500-1:1000, IF/ICC 1:100-1:500, ELISA(peptide) 1:20000-1:40000
Restrictions:	For Research Use only

## Handling

Format:	Liquid
Concentration:	1 mg/mL
Buffer:	Rabbit IgG in phosphate buffered saline , pH 7.4, 150 mM NaCl, 0.02 % sodium azide and 50 % glycerol.
Preservative:	Sodium azide
Precaution of Use:	This product contains Sodium azide: a POISONOUS AND HAZARDOUS SUBSTANCE which should be handled by trained staff only.
Storage:	-20 °C
Storage Comment:	Store at -20 °C. Stable for 12 months from date of receipt.
Expiry Date:	12 months



**Western Blotting**

**Image 1.** Western blot analysis of extracts from K562 cells using SLC6A1 antibody. The lane on the left is treated with the antigen-specific peptide.

**Western Blotting**

**Image 2.** Western blot analysis of extracts from rat brain, using SLC6A1 Antibody.

**Immunofluorescence (fixed cells)**

**Image 3.** ABIN6275574 staining Hela by IF/ICC. The sample were fixed with PFA and permeabilized in 0.1% Triton X-100, then blocked in 10% serum for 45 minutes at 25°C. The primary antibody was diluted at 1/200 and incubated with the sample for 1 hour at 37°C. An Alexa Fluor 594 conjugated goat anti-rabbit IgG (H+L) Ab, diluted at 1/600, was used as the secondary antibody.