

Datasheet for ABIN6257239  
**anti-GHRHR antibody (C-Term)**[Go to Product page](#)

## 2 Images

## Overview

Quantity:	100 µL
Target:	GHRHR
Binding Specificity:	C-Term
Reactivity:	Human, Rat, Mouse
Host:	Rabbit
Clonality:	Polyclonal
Conjugate:	This GHRHR antibody is un-conjugated
Application:	Western Blotting (WB), ELISA, Immunofluorescence (IF), Immunocytochemistry (ICC)

## Product Details

Immunogen:	A synthesized peptide derived from human GHRHR, corresponding to a region within C-terminal amino acids.
Isotype:	IgG
Specificity:	GHRHR Antibody detects endogenous levels of total GHRHR.
Predicted Reactivity:	Pig,Horse,Rabbit,Dog,Chicken
Purification:	The antiserum was purified by peptide affinity chromatography using SulfoLink™ Coupling Resin (Thermo Fisher Scientific).

## Target Details

Target:	GHRHR
---------	-------

## Target Details

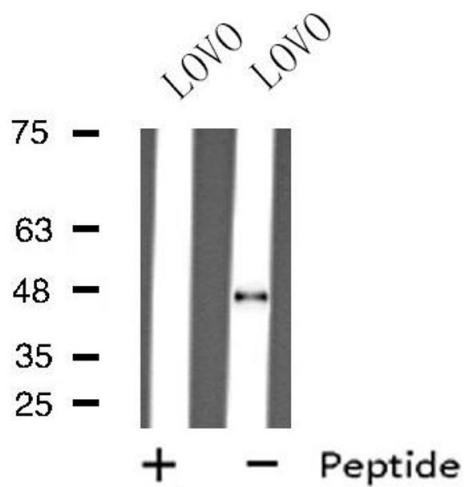
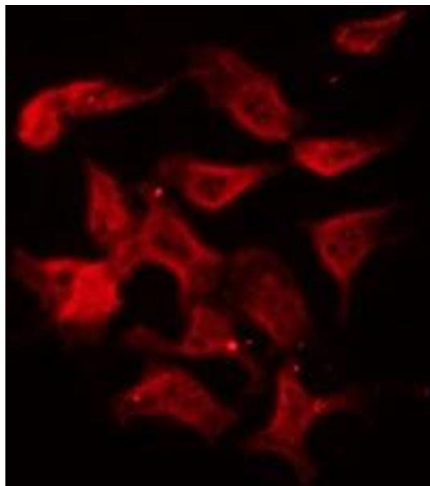
Alternative Name:	GHRHR ( <a href="#">GHRHR Products</a> )
Background:	Description: Receptor for GRF, coupled to G proteins which activate adenylyl cyclase. Stimulates somatotroph cell growth, growth hormone gene transcription and growth hormone secretion. Gene: GHRHR
Molecular Weight:	47 kDa
Gene ID:	2692
UniProt:	<a href="#">Q02643</a>
Pathways:	<a href="#">Intracellular Steroid Hormone Receptor Signaling Pathway</a> , <a href="#">Hormone Transport</a> , <a href="#">Regulation of Intracellular Steroid Hormone Receptor Signaling</a> , <a href="#">cAMP Metabolic Process</a>

## Application Details

Application Notes:	WB 1:500-1:1000, IF/ICC 1:100-1:500, ELISA(peptide) 1:20000-1:40000
Restrictions:	For Research Use only

## Handling

Format:	Liquid
Concentration:	1 mg/mL
Buffer:	Rabbit IgG in phosphate buffered saline , pH 7.4, 150 mM NaCl, 0.02 % sodium azide and 50 % glycerol.
Preservative:	Sodium azide
Precaution of Use:	This product contains Sodium azide: a POISONOUS AND HAZARDOUS SUBSTANCE which should be handled by trained staff only.
Storage:	-20 °C
Storage Comment:	Store at -20 °C. Stable for 12 months from date of receipt.
Expiry Date:	12 months



#### Immunofluorescence (fixed cells)

**Image 1.** ABIN6275998 staining LOVO by IF/ICC. The sample were fixed with PFA and permeabilized in 0.1% Triton X-100, then blocked in 10% serum for 45 minutes at 25°C. The primary antibody was diluted at 1/200 and incubated with the sample for 1 hour at 37°C. An Alexa Fluor 594 conjugated goat anti-rabbit IgG (H+L) Ab, diluted at 1/600, was used as the secondary antibody

#### Western Blotting

**Image 2.** Western blot analysis of extracts from LOVO cells, using GHRHR antibody.