

## Datasheet for ABIN6257285 anti-Integrin beta 7 antibody (Internal Region)

[Go to Product page](#)

### 2 Images

#### Overview

Quantity:	100 µL
Target:	Integrin beta 7 (ITGB7)
Binding Specificity:	Internal Region
Reactivity:	Human
Host:	Rabbit
Clonality:	Polyclonal
Conjugate:	This Integrin beta 7 antibody is un-conjugated
Application:	Western Blotting (WB), ELISA, Immunohistochemistry (IHC), Immunofluorescence (IF), Immunocytochemistry (ICC)

#### Product Details

Immunogen:	A synthesized peptide derived from human ITGB7, corresponding to a region within the internal amino acids.
Isotype:	IgG
Specificity:	ITGB7 Antibody detects endogenous levels of total ITGB7.
Predicted Reactivity:	Pig,Bovine,Horse,Sheep,Rabbit,Dog
Purification:	The antiserum was purified by peptide affinity chromatography using SulfoLink™ Coupling Resin (Thermo Fisher Scientific).

#### Target Details

Target:	Integrin beta 7 (ITGB7)
---------	-------------------------

## Target Details

Alternative Name: ITGB7 ([ITGB7 Products](#))

**Background:** Description: Integrin alpha-4/beta-7 (Peyer patches-specific homing receptor LPAM-1) is an adhesion molecule that mediates lymphocyte migration and homing to gut-associated lymphoid tissue (GALT). Integrin alpha-4/beta-7 interacts with the cell surface adhesion molecules MADCAM1 which is normally expressed by the vascular endothelium of the gastrointestinal tract. Interacts also with VCAM1 and fibronectin, an extracellular matrix component. It recognizes one or more domains within the alternatively spliced CS-1 region of fibronectin. Interactions involves the tripeptide L-D-T in MADCAM1, and L-D-V in fibronectin. Binds to HIV-1 gp120, thereby allowing the virus to enter GALT, which is thought to be the major trigger of AIDS disease. Interaction would involve a tripeptide L-D-I in HIV-1 gp120. Integrin alpha-E/beta-7 (HML-1) is a receptor for E-cadherin.  
Gene: ITGB7

Molecular Weight: ?87 kDa

Gene ID: 3695

UniProt: [P26010](#)

Pathways: [Integrin Complex](#)

## Application Details

Application Notes: WB 1:500-1:2000, IHC 1:50-1:200, IF/ICC 1:100-1:500, ELISA(peptide) 1:20000-1:40000

Restrictions: For Research Use only

## Handling

Format: Liquid

Concentration: 1 mg/mL

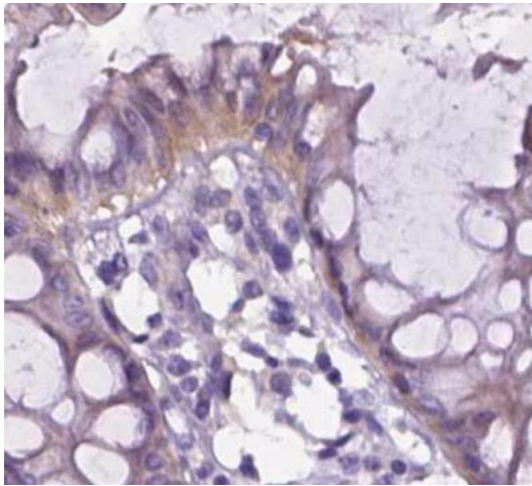
Buffer: Rabbit IgG in phosphate buffered saline, pH 7.4, 150 mM NaCl, 0.02 % sodium azide and 50 % glycerol.

Preservative: Sodium azide

Precaution of Use: This product contains Sodium azide: a POISONOUS AND HAZARDOUS SUBSTANCE which should be handled by trained staff only.

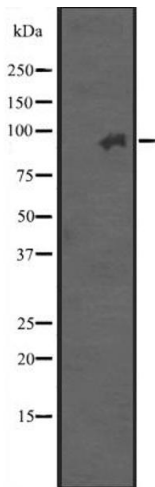
Storage: -20 °C

Expiry Date: 12 months



Immunohistochemistry

**Image 1.** Immunohistochemical analysis of paraffin-embedded Human colon tissue labeling Integrin beta 7



Western Blotting

**Image 2.** Western blot analysis of ITGB7 expression in A431 whole cell lysate ,The lane on the left is treated with the antigen-specific peptide.