



[Go to Product page](#)

Datasheet for ABIN6257293  
**anti-IL-9 antibody (Internal Region)**

2 Images

Overview

Quantity:	100 µL
Target:	IL-9 (IL9)
Binding Specificity:	Internal Region
Reactivity:	Human, Rat
Host:	Rabbit
Clonality:	Polyclonal
Conjugate:	This IL-9 antibody is un-conjugated
Application:	Western Blotting (WB), ELISA, Immunohistochemistry (IHC), Immunocytochemistry (ICC), Immunofluorescence (IF)

Product Details

Immunogen:	A synthesized peptide derived from human IL9, corresponding to a region within the internal amino acids.
Isotype:	IgG
Specificity:	IL9 Antibody detects endogenous levels of total IL9.
Purification:	The antiserum was purified by peptide affinity chromatography using SulfoLink™ Coupling Resin (Thermo Fisher Scientific).

Target Details

Target:	IL-9 (IL9)
Alternative Name:	IL9 ( <a href="#">IL9 Products</a> )

## Target Details

---

Background:	Description: Supports IL-2 independent and IL-4 independent growth of helper T-cells. Gene: IL9
Molecular Weight:	16 kDa
Gene ID:	3578
UniProt:	<a href="#">P15248</a>
Pathways:	<a href="#">JAK-STAT Signaling</a>

## Application Details

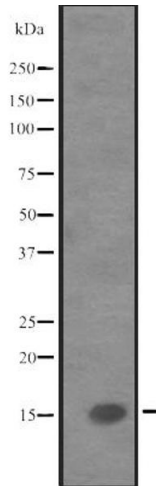
---

Application Notes:	WB 1:500-1:2000, IHC 1:50-1:200, IF/ICC 1:100-1:500, ELISA(peptide) 1:20000-1:40000
Restrictions:	For Research Use only

## Handling

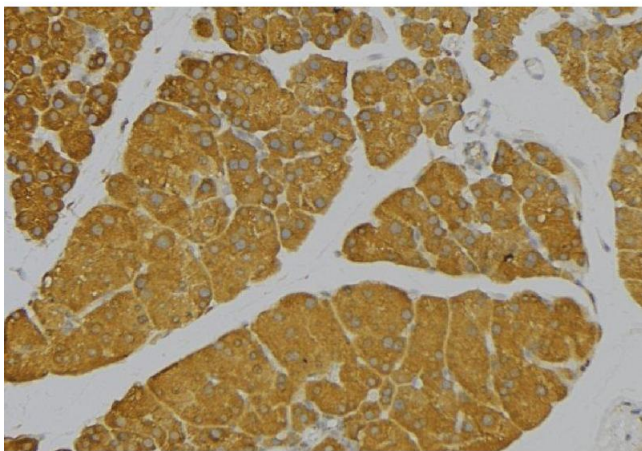
---

Format:	Liquid
Concentration:	1 mg/mL
Buffer:	Rabbit IgG in phosphate buffered saline, pH 7.4, 150 mM NaCl, 0.02 % sodium azide and 50 % glycerol.
Preservative:	Sodium azide
Precaution of Use:	This product contains Sodium azide: a POISONOUS AND HAZARDOUS SUBSTANCE which should be handled by trained staff only.
Storage:	-20 °C
Expiry Date:	12 months



### Western Blotting

**Image 1.** Western blot analysis of IL9 expression in Human fetal liver lysate, The lane on the left is treated with the antigen-specific peptide.



### Immunohistochemistry

**Image 2.** ABIN6273662 at 1/100 staining Human pancreas tissue by IHC-P. The sample was formaldehyde fixed and a heat mediated antigen retrieval step in citrate buffer was performed. The sample was then blocked and incubated with the antibody for 1.5 hours at 22°C. An HRP conjugated goat anti-rabbit antibody was used as the secondary