

## Datasheet for ABIN6257309 anti-LMX1B antibody (Internal Region)

[Go to Product page](#)

### 2 Images

#### Overview

Quantity:	100 µL
Target:	LMX1B
Binding Specificity:	Internal Region
Reactivity:	Human, Mouse
Host:	Rabbit
Clonality:	Polyclonal
Conjugate:	This LMX1B antibody is un-conjugated
Application:	Western Blotting (WB), ELISA, Immunofluorescence (IF), Immunocytochemistry (ICC)

#### Product Details

Immunogen:	A synthesized peptide derived from human LMX1B, corresponding to a region within the internal amino acids.
Isotype:	IgG
Specificity:	LMX1B Antibody detects endogenous levels of total LMX1B.
Predicted Reactivity:	Pig,Bovine,Horse,Sheep,Dog
Purification:	The antiserum was purified by peptide affinity chromatography using SulfoLink™ Coupling Resin (Thermo Fisher Scientific).

#### Target Details

Target:	LMX1B
---------	-------

## Target Details

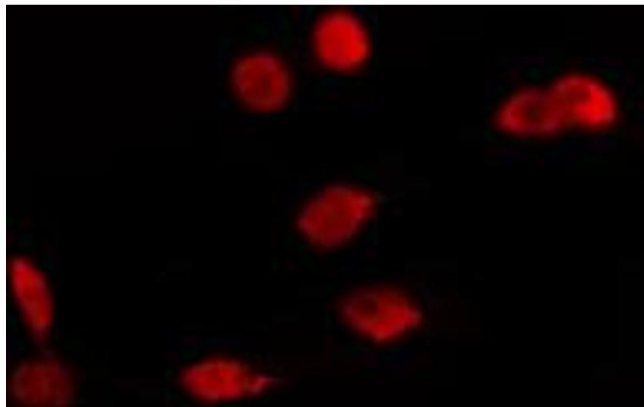
Alternative Name:	LMX1B ( <a href="#">LMX1B Products</a> )
Background:	Description: Essential for the specification of dorsal limb fate at both the zeugopodal and autopodal levels. Gene: LMX1B
Molecular Weight:	40 kDa
Gene ID:	4010
UniProt:	<a href="#">O60663</a>
Pathways:	<a href="#">Dopaminergic Neurogenesis</a>

## Application Details

Application Notes:	WB 1:500-1:1000, IF/ICC 1:100-1:500, ELISA(peptide) 1:20000-1:40000
Restrictions:	For Research Use only

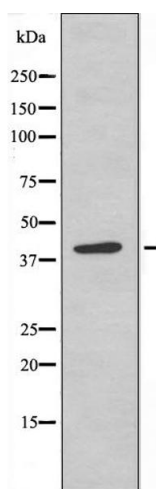
## Handling

Format:	Liquid
Concentration:	1 mg/mL
Buffer:	Rabbit IgG in phosphate buffered saline , pH 7.4, 150 mM NaCl, 0.02 % sodium azide and 50 % glycerol.
Preservative:	Sodium azide
Precaution of Use:	This product contains Sodium azide: a POISONOUS AND HAZARDOUS SUBSTANCE which should be handled by trained staff only.
Storage:	-20 °C
Storage Comment:	Store at -20 °C. Stable for 12 months from date of receipt.
Expiry Date:	12 months



#### Immunofluorescence (fixed cells)

**Image 1.** ABIN6274113 staining HeLa cells by IF/ICC. The sample were fixed with PFA and permeabilized in 0.1% Triton X-100, then blocked in 10% serum for 45 minutes at 25°C. The primary antibody was diluted at 1/200 and incubated with the sample for 1 hour at 37°C. An Alexa Fluor 594 conjugated goat anti-rabbit IgG (H+L) antibody (Cat.# S0006), diluted at 1/600, was used as secondary antibody.



#### Western Blotting

**Image 2.** Western blot analysis of extracts from Jurkat cells using LMX1B antibody.