

Datasheet for ABIN6257327

**anti-Superoxide dismutase copper chaperone antibody (C-Term)**[Go to Product page](#)**1** Image

## Overview

Quantity:	100 µL
Target:	Superoxide dismutase copper chaperone (CCS)
Binding Specificity:	C-Term
Reactivity:	Human, Mouse, Rat
Host:	Rabbit
Clonality:	Polyclonal
Conjugate:	This Superoxide dismutase copper chaperone antibody is un-conjugated
Application:	Western Blotting (WB), ELISA, Immunohistochemistry (IHC), Immunocytochemistry (ICC), Immunofluorescence (IF)

## Product Details

Immunogen:	A synthesized peptide derived from human CCS/SOD4, corresponding to a region within C-terminal amino acids.
Isotype:	IgG
Specificity:	CCS/SOD4 Antibody detects endogenous levels of total CCS/SOD4.
Predicted Reactivity:	Pig,Horse,Sheep,Rabbit
Purification:	The antiserum was purified by peptide affinity chromatography using SulfoLink™ Coupling Resin (Thermo Fisher Scientific).

## Target Details

Target:	Superoxide dismutase copper chaperone (CCS)
---------	---

## Target Details

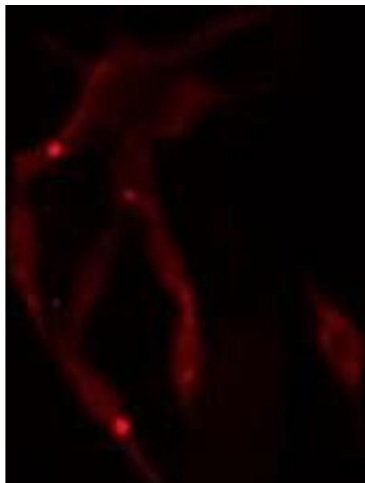
Alternative Name:	CCS ( <a href="#">CCS Products</a> )
Background:	Description: Delivers copper to copper zinc superoxide dismutase (SOD1). Gene: CCS
Molecular Weight:	32 kDa
Gene ID:	9973
UniProt:	<a href="#">O14618</a>
Pathways:	<a href="#">Transition Metal Ion Homeostasis</a>

## Application Details

Application Notes:	WB 1:500-1:1000, IF/ICC 1:100-1:500, IHC 1:50-1:200, ELISA(peptide) 1:20000-1:40000
Restrictions:	For Research Use only

## Handling

Format:	Liquid
Concentration:	1 mg/mL
Buffer:	Rabbit IgG in phosphate buffered saline , pH 7.4, 150 mM NaCl, 0.02 % sodium azide and 50 % glycerol.
Preservative:	Sodium azide
Precaution of Use:	This product contains Sodium azide: a POISONOUS AND HAZARDOUS SUBSTANCE which should be handled by trained staff only.
Storage:	-20 °C
Storage Comment:	Store at -20 °C. Stable for 12 months from date of receipt.
Expiry Date:	12 months



#### Immunofluorescence (fixed cells)

**Image 1.** ABIN6275040 staining NIH-3T3 cells by IF/ICC.

The sample were fixed with PFA and permeabilized in 0.1% Triton X-100, then blocked in 10% serum for 45 minutes at 25°C. The primary antibody was diluted at 1/200 and incubated with the sample for 1 hour at 37°C. An Alexa Fluor 594 conjugated goat anti-rabbit IgG (H+L) antibody (Cat.# S0006), diluted at 1/600, was used as secondary antibody.