



[Go to Product page](#)

Datasheet for ABIN6257379

anti-NUFIP2 antibody (Internal Region)

2 Images

Overview

Quantity:	100 µL
Target:	NUFIP2
Binding Specificity:	Internal Region
Reactivity:	Mouse, Human, Rat
Host:	Rabbit
Clonality:	Polyclonal
Conjugate:	This NUFIP2 antibody is un-conjugated
Application:	Western Blotting (WB), ELISA, Immunocytochemistry (ICC), Immunofluorescence (IF), Immunohistochemistry (IHC)

Product Details

Immunogen:	A synthesized peptide derived from human NUFIP2, corresponding to a region within the internal amino acids.
Isotype:	IgG
Specificity:	NUFIP2 Antibody detects endogenous levels of total NUFIP2.
Predicted Reactivity:	Pig,Zebrafish,Bovine,Horse,Sheep,Rabbit,Dog,Chicken,Xenopus
Purification:	The antiserum was purified by peptide affinity chromatography using SulfoLink™ Coupling Resin (Thermo Fisher Scientific).

Target Details

Target:	NUFIP2
---------	--------

Target Details

Alternative Name: NUFIP2 ([NUFIP2 Products](#))

Background: Description: Binds RNA.
Gene: NUFIP2

Molecular Weight: 76 kDa

Gene ID: 57532

UniProt: [Q7Z417](#)

Application Details

Application Notes: WB 1:500-1:2000, IF/ICC 1:100-1:500, IHC 1:50-1:200, ELISA(peptide) 1:20000-1:40000

Restrictions: For Research Use only

Handling

Format: Liquid

Concentration: 1 mg/mL

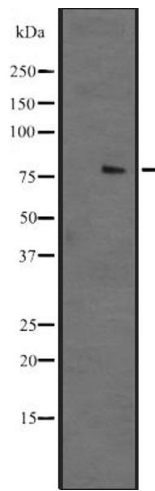
Buffer: Rabbit IgG in phosphate buffered saline, pH 7.4, 150 mM NaCl, 0.02 % sodium azide and 50 % glycerol.

Preservative: Sodium azide

Precaution of Use: This product contains Sodium azide: a POISONOUS AND HAZARDOUS SUBSTANCE which should be handled by trained staff only.

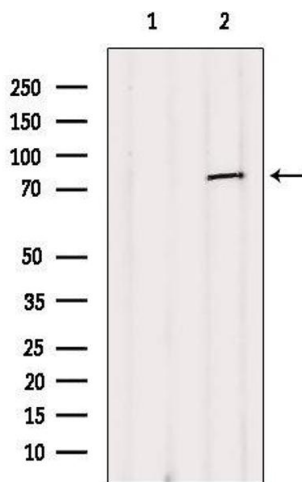
Storage: -20 °C

Expiry Date: 12 months



Western Blotting

Image 1. Western blot analysis of NUFIP2 expression in NTERA2 cell lysate. The lane on the left is treated with the antigen-specific peptide.



Western Blotting

Image 2. Western blot analysis of extracts from B16F10, using NUFIP2 Antibody. The lane on the left was treated with blocking peptide.