



Datasheet for ABIN6257396  
**anti-OGFR antibody (Internal Region)**



[Go to Product page](#)

2 Images

Overview

Quantity:	100 µL
Target:	OGFR
Binding Specificity:	Internal Region
Reactivity:	Human
Host:	Rabbit
Clonality:	Polyclonal
Conjugate:	This OGFR antibody is un-conjugated
Application:	Western Blotting (WB), ELISA, Immunofluorescence (IF), Immunocytochemistry (ICC)

Product Details

Immunogen:	A synthesized peptide derived from human OGFR, corresponding to a region within the internal amino acids.
Isotype:	IgG
Specificity:	OGFR Antibody detects endogenous levels of total OGFR.
Purification:	The antiserum was purified by peptide affinity chromatography using SulfoLink™ Coupling Resin (Thermo Fisher Scientific).

Target Details

Target:	OGFR
Alternative Name:	OGFR ( <a href="#">OGFR Products</a> )

## Target Details

---

Background:	Description: Receptor for opioid growth factor (OGF), also known as Met-enkephalin. Seems to be involved in growth regulation. Gene: OGFR
Molecular Weight:	80 kDa
Gene ID:	11054
UniProt:	<a href="#">Q9NZT2</a>

## Application Details

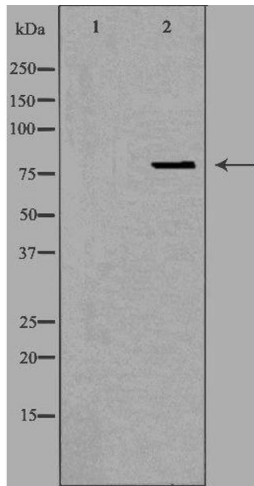
---

Application Notes:	WB 1:500-1:1000, IF/ICC 1:100-1:500, ELISA(peptide) 1:20000-1:40000
Restrictions:	For Research Use only

## Handling

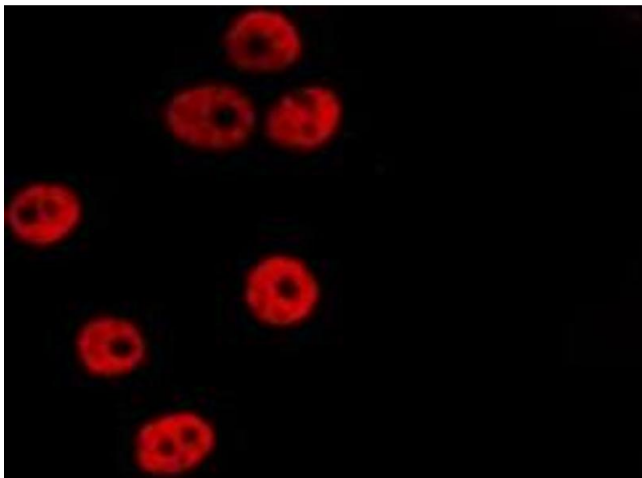
---

Format:	Liquid
Concentration:	1 mg/mL
Buffer:	Rabbit IgG in phosphate buffered saline , pH 7.4, 150 mM NaCl, 0.02 % sodium azide and 50 % glycerol.
Preservative:	Sodium azide
Precaution of Use:	This product contains Sodium azide: a POISONOUS AND HAZARDOUS SUBSTANCE which should be handled by trained staff only.
Storage:	-20 °C
Storage Comment:	Store at -20 °C. Stable for 12 months from date of receipt.
Expiry Date:	12 months



### Western Blotting

**Image 1.** Western blot analysis of extracts from HeLa cells using OGFR antibody. The lane on the left is treated with the antigen-specific peptide.



### Immunofluorescence (fixed cells)

**Image 2.** ABIN6275332 staining HepG2 by IF/ICC. The sample were fixed with PFA and permeabilized in 0.1% Triton X-100, then blocked in 10% serum for 45 minutes at 25°C. The primary antibody was diluted at 1/200 and incubated with the sample for 1 hour at 37°C. An Alexa Fluor 594 conjugated goat anti-rabbit IgG (H+L) Ab, diluted at 1/600, was used as the secondary antibody.