

Datasheet for ABIN6257398
anti-Rho-related GTP-binding protein antibody



[Go to Product page](#)

2 Images

Overview

Quantity:	100 µL
Target:	Rho-related GTP-binding protein (RhO (pan))
Reactivity:	Human, Mouse, Rat
Host:	Rabbit
Clonality:	Polyclonal
Conjugate:	This Rho-related GTP-binding protein antibody is un-conjugated
Application:	ELISA, Western Blotting (WB)

Product Details

Immunogen:	A synthesized peptide
Isotype:	IgG
Specificity:	RHO Antibody detects endogenous levels of total RHO
Cross-Reactivity:	Human, Mouse (Murine), Rat (Rattus)
Purification:	The antiserum was purified by peptide affinity chromatography using SulfoLink™ Coupling Resin (Thermo Fisher Scientific).

Target Details

Target:	Rho-related GTP-binding protein (RhO (pan))
Alternative Name:	RHO (RhO (pan) Products)
Target Type:	Chemical

Target Details

Background: Description: Photoreceptor required for image-forming vision at low light intensity (PubMed:8107847, PubMed:7846071). Required for photoreceptor cell viability after birth (PubMed:2215617, PubMed:12566452). Light-induced isomerization of the chromophore 11-cis-retinal to all-trans-retinal triggers a conformational change that activates signaling via G-proteins (PubMed:8107847, PubMed:28524165, PubMed:26200343, PubMed:28753425). Subsequent receptor phosphorylation mediates displacement of the bound G-protein alpha subunit by the arrestin SAG and terminates signaling (PubMed:28524165, PubMed:26200343).
Gene: RHO

Molecular Weight: 38 kDa

Gene ID: 6010

UniProt: [P08100](#)

Application Details

Application Notes: WB 1:500~1:1000

Restrictions: For Research Use only

Handling

Format: Liquid

Concentration: 1 mg/mL

Buffer: Rabbit IgG in phosphate buffered saline , pH 7.4, 150 mM NaCl, 0.02 % sodium azide and 50 % glycerol.

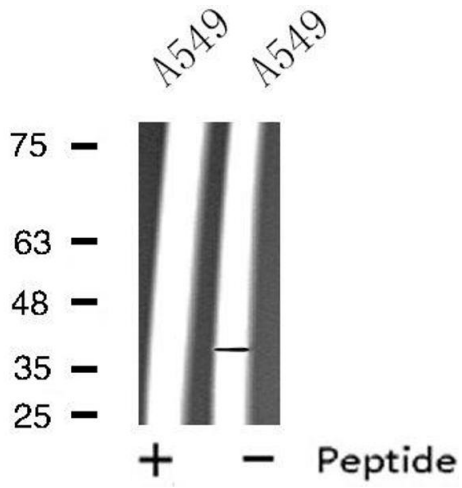
Preservative: Sodium azide

Precaution of Use: This product contains Sodium azide: a POISONOUS AND HAZARDOUS SUBSTANCE which should be handled by trained staff only.

Storage: -20 °C

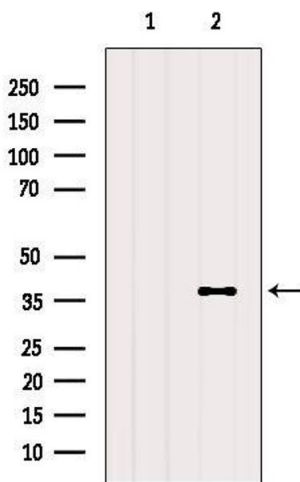
Storage Comment: Store at -20 °C.Stable for 12 months from date of receipt

Expiry Date: 12 months



Western Blotting

Image 1. Western blot analysis of extracts from A549 cells, using RHO antibody.



Western Blotting

Image 2. Western blot analysis of extracts from Mouse muscle, using RHO Antibody. The lane on the left was treated with blocking peptide.