

Datasheet for ABIN6257400 anti-OR1G1 antibody (Internal Region)

[Go to Product page](#)

2 Images

Overview

Quantity:	100 µL
Target:	OR1G1
Binding Specificity:	Internal Region
Reactivity:	Human
Host:	Rabbit
Clonality:	Polyclonal
Conjugate:	This OR1G1 antibody is un-conjugated
Application:	Western Blotting (WB), ELISA, Immunohistochemistry (IHC)

Product Details

Immunogen:	A synthesized peptide derived from human OR1G1, corresponding to a region within the internal amino acids.
Isotype:	IgG
Specificity:	OR1G1 Antibody detects endogenous levels of total OR1G1.
Predicted Reactivity:	Pig,Bovine,Sheep
Purification:	The antiserum was purified by peptide affinity chromatography using SulfoLink™ Coupling Resin (Thermo Fisher Scientific).

Target Details

Target:	OR1G1
---------	-------

Target Details

Alternative Name: OR1G1 ([OR1G1 Products](#))

Background: Description: Odorant receptor.
Gene: OR1G1

Gene ID: 8390

UniProt: [P47890](#)

Application Details

Application Notes: WB 1:500-1:2000, IHC 1:50-1:200, ELISA(peptide) 1:20000-1:40000

Restrictions: For Research Use only

Handling

Format: Liquid

Concentration: 1 mg/mL

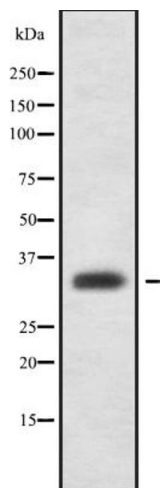
Buffer: Rabbit IgG in phosphate buffered saline, pH 7.4, 150 mM NaCl, 0.02 % sodium azide and 50 % glycerol.

Preservative: Sodium azide

Precaution of Use: This product contains Sodium azide: a POISONOUS AND HAZARDOUS SUBSTANCE which should be handled by trained staff only.

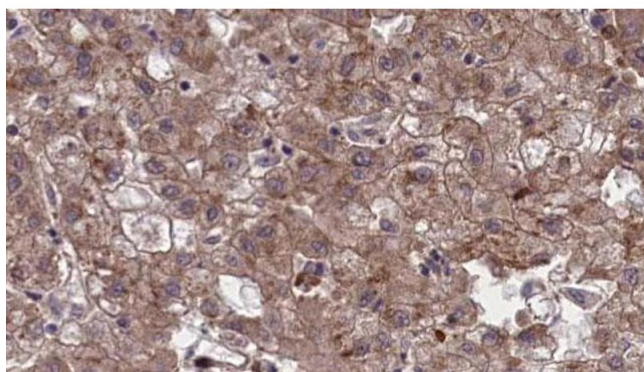
Storage: -20 °C

Expiry Date: 12 months



Western Blotting

Image 1. Western blot analysis of OR1G1 expression in HEK293 cells. The lane on the left is treated with the antigen-specific peptide.



Immunohistochemistry

Image 2. ABIN6273967 at 1/100 staining Human liver cancer tissue by IHC-P. The sample was formaldehyde fixed and a heat mediated antigen retrieval step in citrate buffer was performed. The sample was then blocked and incubated with the antibody for 1.5 hours at 22°C. An HRP conjugated goat anti-rabbit antibody was used as the secondary.