

Datasheet for ABIN6257431  
**anti-PTH1R antibody (pThr1)**[Go to Product page](#)

## 4 Images

## Overview

Quantity:	100 µL
Target:	PTH1R
Binding Specificity:	pThr1
Reactivity:	Human, Rat, Mouse
Host:	Rabbit
Clonality:	Polyclonal
Conjugate:	This PTH1R antibody is un-conjugated
Application:	Western Blotting (WB), Immunohistochemistry (IHC), ELISA, Immunofluorescence (IF), Immunocytochemistry (ICC)

## Product Details

Immunogen:	A synthesized peptide derived from human PTHR1, corresponding to a region within the internal amino acids.
Isotype:	IgG
Specificity:	PTHR1 Antibody detects endogenous levels of total PTHR1.
Predicted Reactivity:	Pig,Bovine,Horse,Sheep,Rabbit,Dog,Chicken,Xenopus
Purification:	The antiserum was purified by peptide affinity chromatography using SulfoLink™ Coupling Resin (Thermo Fisher Scientific).

## Target Details

Target:	PTH1R
---------	-------

## Target Details

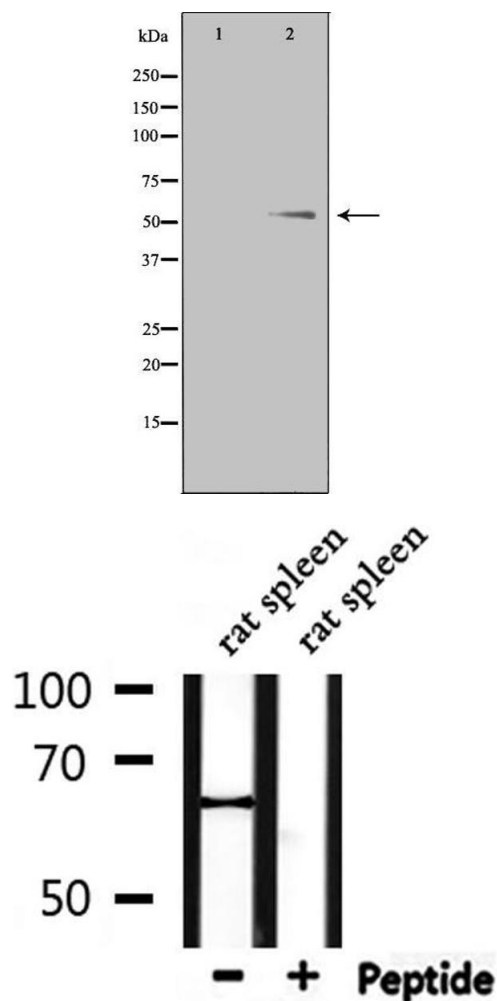
Alternative Name:	PTH1R ( <a href="#">PTH1R Products</a> )
Background:	<p>Description: Receptor for parathyroid hormone and for parathyroid hormone-related peptide.</p> <p>The activity of this receptor is mediated by G proteins which activate adenylyl cyclase and also a phosphatidylinositol-calcium second messenger system.</p> <p>Gene: PTH1R</p>
Molecular Weight:	52 kDa
Gene ID:	5745
UniProt:	<a href="#">Q03431</a>
Pathways:	<a href="#">Regulation of Carbohydrate Metabolic Process</a>

## Application Details

Application Notes:	WB 1:500-1:1000, IHC: 1:50-1:200, IF/ICC 1:100-1:500, ELISA(peptide) 1:20000-1:40000
Restrictions:	For Research Use only

## Handling

Format:	Liquid
Concentration:	1 mg/mL
Buffer:	Rabbit IgG in phosphate buffered saline , pH 7.4, 150 mM NaCl, 0.02 % sodium azide and 50 % glycerol.
Preservative:	Sodium azide
Precaution of Use:	This product contains Sodium azide: a POISONOUS AND HAZARDOUS SUBSTANCE which should be handled by trained staff only.
Storage:	-20 °C
Storage Comment:	Store at -20 °C. Stable for 12 months from date of receipt.
Expiry Date:	12 months



### Western Blotting

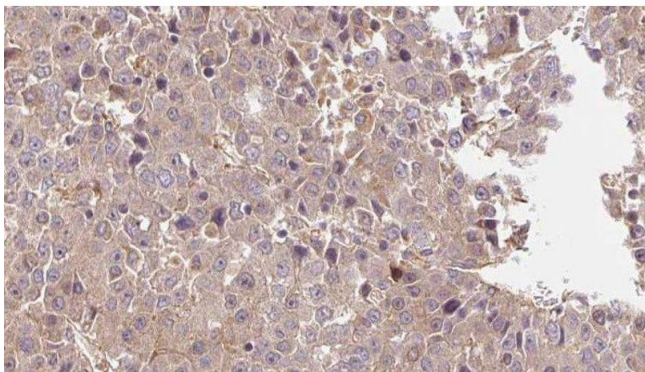
**Image 1.** Western blot analysis of extracts from Jurkat cells, using PTHR1 antibody. The lane on the left is treated with the antigen-specific peptide.

### Western Blotting

**Image 2.** Western blot analysis of extracts from rat spleen, using PTHR1 Antibody.

### Immunohistochemistry

**Image 3.** ABIN6275975 at 1/100 staining Human liver cancer tissue by IHC-P. The sample was formaldehyde fixed and a heat mediated antigen retrieval step in citrate buffer was performed. The sample was then blocked and incubated with the antibody for 1.5 hours at 22°C. An HRP conjugated goat anti-rabbit antibody was used as the secondary



Please check the [product details page](#) for more images. Overall 4 images are available for ABIN6257431.