

Datasheet for ABIN6257451  
**anti-RAD1 antibody (Internal Region)**[Go to Product page](#)

## 1 Image

## Overview

Quantity:	100 µL
Target:	RAD1
Binding Specificity:	Internal Region
Reactivity:	Human, Mouse
Host:	Rabbit
Clonality:	Polyclonal
Conjugate:	This RAD1 antibody is un-conjugated
Application:	Western Blotting (WB), ELISA, Immunofluorescence (IF), Immunocytochemistry (ICC)

## Product Details

Immunogen:	A synthesized peptide derived from human RAD1, corresponding to a region within the internal amino acids.
Isotype:	IgG
Specificity:	RAD1 Antibody detects endogenous levels of total RAD1.
Predicted Reactivity:	Pig,Bovine,Horse,Sheep,Rabbit,Dog,Chicken,Xenopus
Purification:	The antiserum was purified by peptide affinity chromatography using SulfoLink™ Coupling Resin (Thermo Fisher Scientific).

## Target Details

Target:	RAD1
---------	------

## Target Details

Alternative Name:	RAD1 ( <a href="#">RAD1 Products</a> )
Background:	<p>Description: Component of the 9-1-1 cell-cycle checkpoint response complex that plays a major role in DNA repair (PubMed:10846170, PubMed:10884395). The 9-1-1 complex is recruited to DNA lesion upon damage by the RAD17-replication factor C (RFC) clamp loader complex (PubMed:12578958). Acts then as a sliding clamp platform on DNA for several proteins involved in long-patch base excision repair (LP-BER) (PubMed:15871698). The 9-1-1 complex stimulates DNA polymerase beta (POLB) activity by increasing its affinity for the 3'-OH end of the primer-template and stabilizes POLB to those sites where LP-BER proceeds, endonuclease FEN1 cleavage activity on substrates with double, nick, or gap flaps of distinct sequences and lengths, and DNA ligase I (LIG1) on long-patch base excision repair substrates (PubMed:15314187, PubMed:15556996, PubMed:15871698). The 9-1-1 complex is necessary for the recruitment of RHN01 to sites of double-stranded breaks (DSB) occurring during the S phase (PubMed:21659603). Isoform 1 possesses 3'-&gt;5' double stranded DNA exonuclease activity (PubMed:9660799).</p> <p>Gene: RAD1</p>
Molecular Weight:	32 kDa
Gene ID:	5810
UniProt:	<a href="#">O60671</a>
Pathways:	<a href="#">M Phase</a>

## Application Details

Application Notes:	WB 1:500-1:2000, IF/ICC 1:100-1:500, ELISA(peptide) 1:20000-1:40000
Restrictions:	For Research Use only

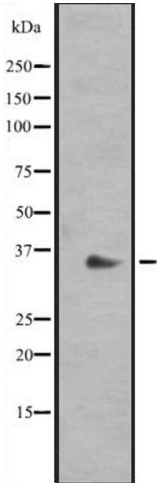
## Handling

Format:	Liquid
Concentration:	1 mg/mL
Buffer:	Rabbit IgG in phosphate buffered saline, pH 7.4, 150 mM NaCl, 0.02 % sodium azide and 50 % glycerol.
Preservative:	Sodium azide
Precaution of Use:	This product contains Sodium azide: a POISONOUS AND HAZARDOUS SUBSTANCE which

Handling

	should be handled by trained staff only.
Storage:	-20 °C
Expiry Date:	12 months

Images



**Western Blotting**

**Image 1.** Western blot analysis of RAD1 expression in Hela cell lysate, The lane on the left is treated with the antigen-specific peptide.