

Datasheet for ABIN6257454  
**anti-RANBP17 antibody (N-Term)**

## 2 Images

[Go to Product page](#)

## Overview

Quantity:	100 µL
Target:	RANBP17
Binding Specificity:	N-Term
Reactivity:	Human, Mouse, Rat
Host:	Rabbit
Clonality:	Polyclonal
Conjugate:	This RANBP17 antibody is un-conjugated
Application:	Western Blotting (WB), ELISA, Immunohistochemistry (IHC), Immunocytochemistry (ICC), Immunofluorescence (IF)

## Product Details

Immunogen:	A synthesized peptide derived from human RANBP17, corresponding to a region within N-terminal amino acids.
Isotype:	IgG
Specificity:	RANBP17 Antibody detects endogenous levels of total RANBP17.
Predicted Reactivity:	Pig,Bovine,Horse,Sheep,Rabbit,Dog
Purification:	The antiserum was purified by peptide affinity chromatography using SulfoLink™ Coupling Resin (Thermo Fisher Scientific).

## Target Details

Target:	RANBP17
---------	---------

## Target Details

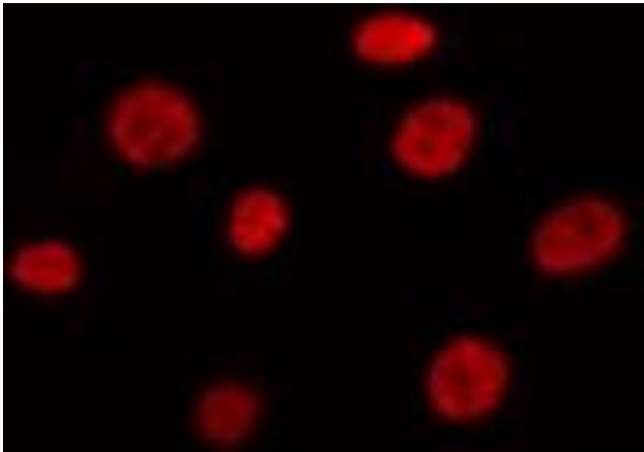
Alternative Name:	RANBP17 ( <a href="#">RANBP17 Products</a> )
Background:	Description: May function as a nuclear transport receptor. Gene: RANBP17
Molecular Weight:	125 kDa
Gene ID:	64901
UniProt:	<a href="#">Q9H2T7</a>
Pathways:	<a href="#">Protein targeting to Nucleus</a>

## Application Details

Application Notes:	WB 1:500-1:1000, IF/ICC 1:100-1:500, IHC 1:50-1:200, ELISA(peptide) 1:20000-1:40000
Restrictions:	For Research Use only

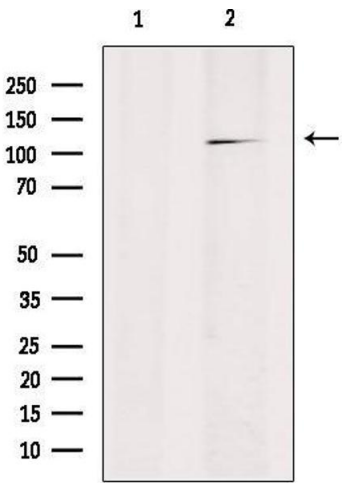
## Handling

Format:	Liquid
Concentration:	1 mg/mL
Buffer:	Rabbit IgG in phosphate buffered saline , pH 7.4, 150 mM NaCl, 0.02 % sodium azide and 50 % glycerol.
Preservative:	Sodium azide
Precaution of Use:	This product contains Sodium azide: a POISONOUS AND HAZARDOUS SUBSTANCE which should be handled by trained staff only.
Storage:	-20 °C
Storage Comment:	Store at -20 °C. Stable for 12 months from date of receipt.
Expiry Date:	12 months



**Immunofluorescence (fixed cells)**

**Image 1.** ABIN6275443 staining HeLa by IF/ICC. The sample were fixed with PFA and permeabilized in 0.1% Triton X-100, then blocked in 10% serum for 45 minutes at 25°C. The primary antibody was diluted at 1/200 and incubated with the sample for 1 hour at 37°C. An Alexa Fluor 594 conjugated goat anti-rabbit IgG (H+L) Ab, diluted at 1/600, was used as the secondary antibody



**Western Blotting**

**Image 2.** Western blot analysis of extracts from HepG2, using RANBP17 Antibody. Lane 1 was treated with the blocking peptide.